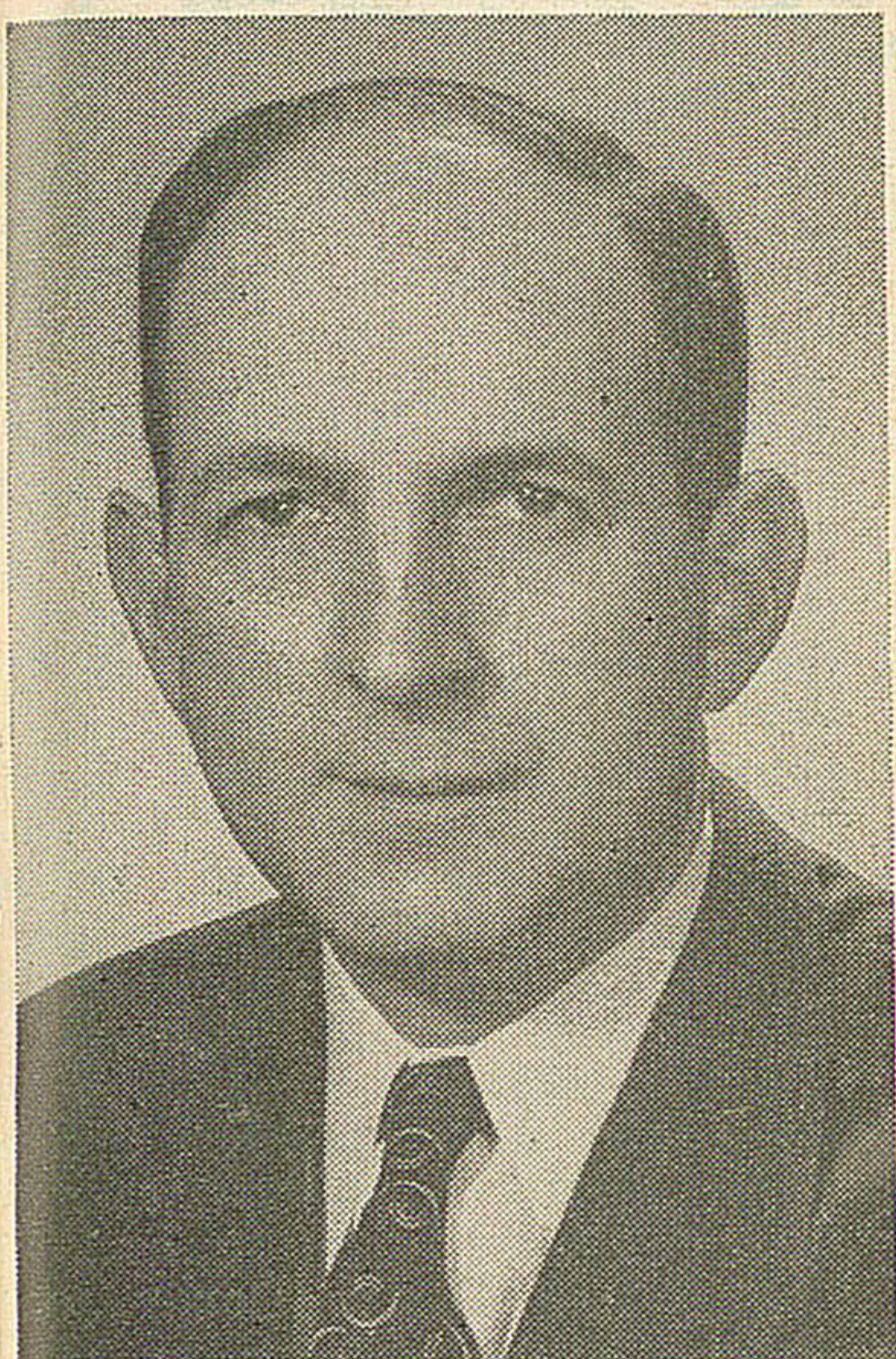


Survey Notes Increase Of Jewish Students In Elementary Schools

By SOLOMON ABRAMS

Educational Director Hebrew Institute of Pittsburgh



Solomon Abrams

For the third successive year, the 1948 "Yom Kippur Census" of the Jewish student population of the Pittsburgh public schools, conducted by the Hebrew Institute in cooperation with the Board of Public Education, reveals an over-all increase. 6,058 Jewish children are enrolled in the local elementary and high schools, beginning with kindergarten classes and ending with the twelfth grade in senior high school. This figure compares with the number of 6,023 Jewish children registered in 1947 in the public schools, and 5,973 children registered in 1946. 4,449 children are enrolled in elementary schools this year, including 639 in the kindergartens, compared to 4,167 last year,—re-

flecting a gain in one year of 6.8%. In 1946, 3,998 Jewish children attended Pittsburgh elementary schools. In the past two years, the Jewish elementary school population has increased a total of 11%.

Decrease in High Schools

The enrollment of Jewish students in the city high school reflects a decrease of 47 students. 1,609 students are registered this year, as against 1,656 students in 1947, and 1,775 students in 1946. The senior high school population has experienced a decrease of 3% in the past year and a total of 9% in the past two years.

Downward Trend Reversed

The over-all increase reverses was formerly a disturbing downward trend in the Jewish child population of the community. In 1924, over 9,000 Jewish children were enrolled in the local public schools. By 1940, this number had decreased approximately 7,500. The decrease continued until 1946 when 5,878 children were enrolled in the public schools. Since 1946 the increase in the over-all Jewish student population has totaled 180 children. However, the senior high school Jewish population has continued to decrease steadily since 1940 when 2,370 students were registered compared to 1,609 students this year. The loss of 761 students in eight years is equivalent to a percentage decrease of 32% in the Jewish high school population.

In 1940, the senior high school population represented 32% of the total Jewish student population. Today it represents 26.6 percent.

58% of Students Attend Squirrel Hill Schools

3,541 kindergarten, elementary, and high school students attend

Squirrel High Schools. This number is 58.4% of the total number of Jewish students enrolled in local public schools. In 1947, 3,448 students attended Squirrel Hill Schools.

2,598 pupils are registered in Squirrel Hill's elementary and junior high schools. Last year 2,503 were registered, and in 1946, 2,297. In 1944 when the Hebrew Institute moved to Squirrel Hill, 2,013 students were enrolled in Squirrel Hills' elementary and junior high schools.

Colfax, Wightman, and Linden Schools show large increases. Colfax, with the city's largest Jewish public school enrollment, numbers 894 Jewish students compared to 791 in 1947. Wightman School gain ranks in second place among city schools, with 470 pupils as against 424 in 1947. The Linden School 271 Jewish students—50 more than last year. Taylor-Allderice Junior High School has 365 Jewish students—76 fewer than last year.

North of Forbes Area Gains

It is interesting to note the Jewish school population trend in the north of Forbes area of Squirrel Hill again shows a substantial increase. 741 students attend schools in this area this year compared to 645 students in 1947, 593 in 1946, 560 in 1945, 462 in 1944, and 447 in 1943.

The south of Forbes area of Squirrel Hill numbers 1,857 elementary and junior high school pupils compared to 1,858 last year. Despite the large increase in the Colfax School, the over-all student population figures for this area have remained the same. The comparative figures for 1946 are 1,704 students; for 1945, 1,634 students; for 1944, 1,551 students; and for 1943, 1,665 students.

From these figures we see that the north of Forbes elementary schools since 1943 have gained a total of 294 pupils, while south of Forbes schools, excluding the senior high school, have gained 192 pupils.

East End Shows Largest Gain

The East End elementary schools show an increase of 105 pupils. 982 Jewish elementary school students are registered in the nine public schools of that area this year. 877 students were enrolled in these schools last year, 854 in 1946, 900 in 1943, and 932 in 1940. The Sunnyside School in Stanton Heights has the largest numerical increase in East End with a gain of 47 students. The Fulton School with 397 pupils, 41 more than last year, is now in third place among city elementary schools with large Jewish populations, and the Rogers School with 329 pupils, or 44 more than in 1947, is in fourth place. Only Colfax and Wightman Schools in Squirrel Hill have larger Jewish student bodies.

343 students attended Peabody High School compared to 369 in 1947, and 385 in 1946.

21.9% of the city's Jewish school population attend East End schools.

Oakland Enrollment Decreases

486 Jewish elementary school children or 11.2% of the city's Jewish elementary school population attend schools in the Oakland area. 517 children were enrolled in Oakland schools in 1947 in 1946, and 611 in 1943.

The Hill District, in which over 6,000 Jewish grade school and high school students lived in 1924, has 145 elementary children. 51 Jewish high school students attend Fifth Avenue High School, while 206 Jewish students from the Herron Hill and Dakland areas attend Schenley High.

In the Shadyside district, 49 students are registered compared to 34

in 1947. The Homewood area shows an increase in 5 pupils with a total of 32 enrolled in the various elementary schools. The Northside elementary schools have 41 pupils—9 more than last year but many fewer than the 107 registered in 1940.

Carrick, Beechview and South Hills Schools number 70 children on their rolls in comparison with 68 last year.

The **Mayflower**
On the Boardwalk
ATLANTIC CITY

Every facility for joyous vacationing at the newly beautified MAYFLOWER, directly on the Boardwalk. Finest accommodations, food and service... Enjoy the famous Holiday Room... Relax on spacious sun decks overlooking the ocean... Sea water in baths... Garage adjoins Hotel.

C. Henry Landow, Managing Director

BETTER SERVICE ON THE PARTY-LINE

When you keep calls on the party-line telephone reasonably brief—when you space them out so that others may use the line as well—you set the pattern for better telephone service. You'll find your party-line neighbors following suit. All this adds up to better telephone service for all who share the line.

THE BELL TELEPHONE COMPANY OF PENNSYLVANIA

WILLIE COLLIER'S

Hand Laundry Shirts a Specialty

Pick Up and Delivered

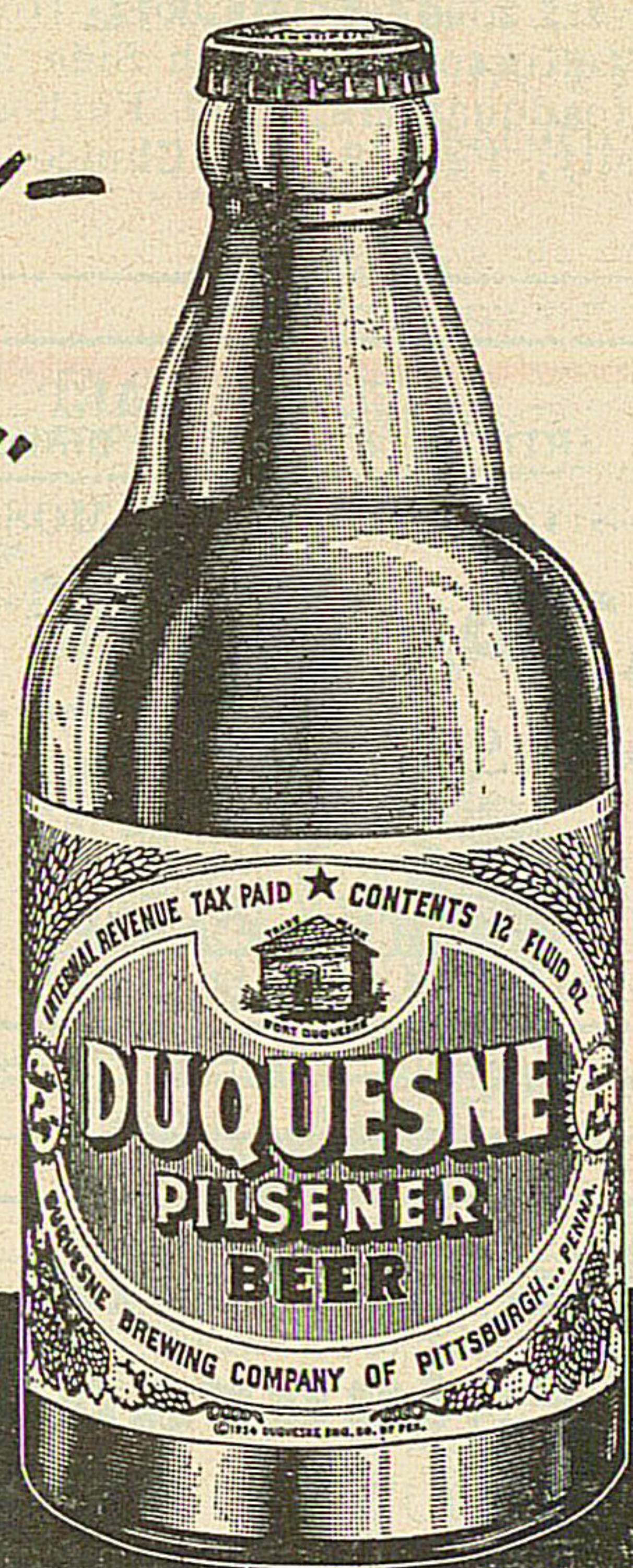
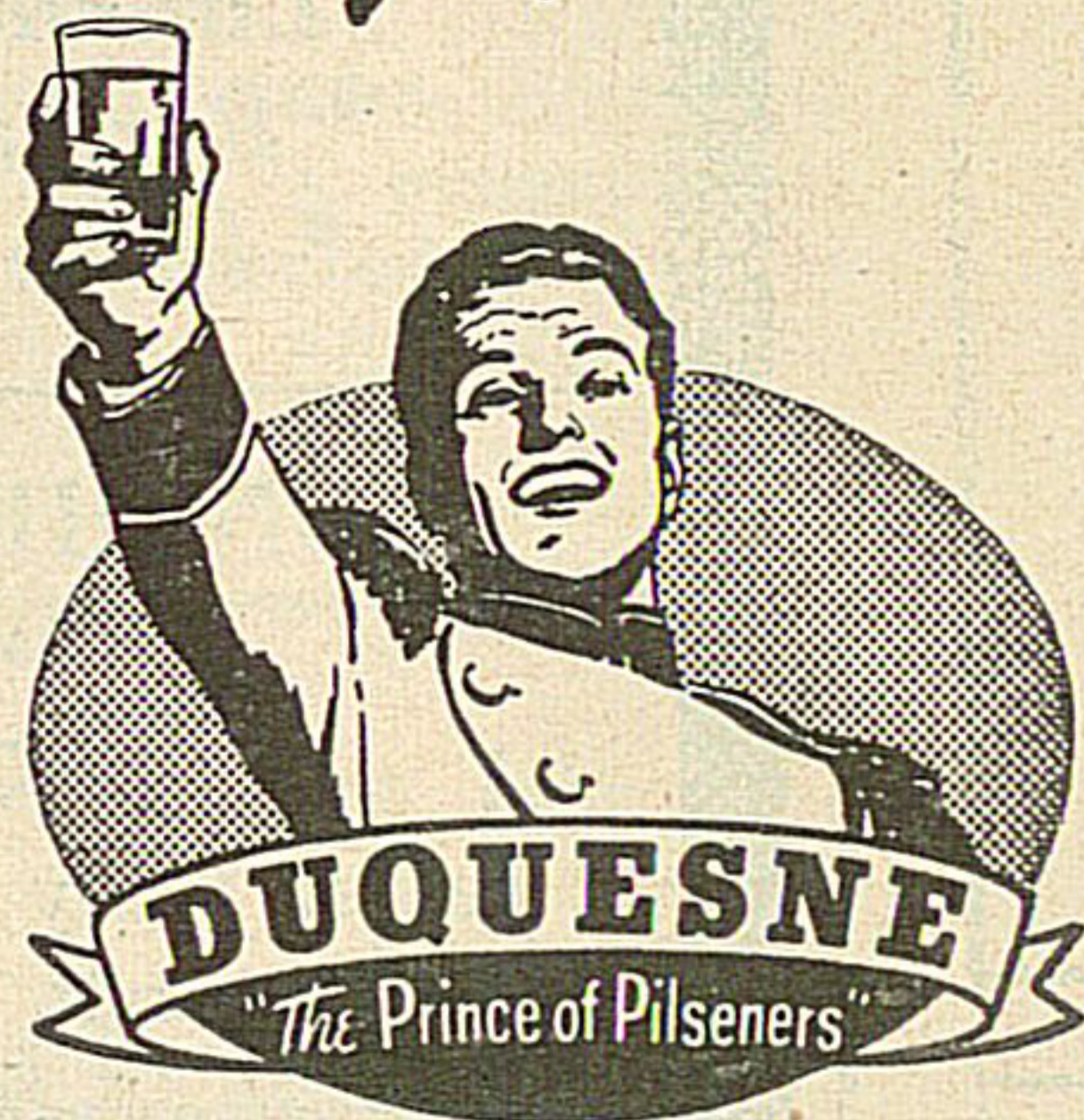
Colliers

1237 Penn Avenue

FOR QUICK SERVICE CALL

COurt 9298

You, too, will say—
"No finer Beer
at any price!"



"The Finest Beer in Town"

DUQUESNE PILSENER

ORDER A SUPPLY TODAY!

Product of the DUQUESNE BREWING COMPANY, PITTSBURGH, PA.

666 GIVES FAST RELIEF when COLD MISERIES STRIKE
LIQUID OR TABLETS