

ISAAC KAUFMANN 1851 - 1921  
Emma Kaufmann Camp Library

3  
2

E. F.  
912

E. F.  
913

E. F.  
914

915

E. F.  
1916

E. F.  
917

1918

1919

1920

F. 0

2

3

2

E. F.  
1912

E. F.  
1913

E. F.  
1914

1915

E. F.  
1916

EMMA FARM ASSOCIATION REPORTS

1912 - 1932 INCL.

E. F.  
1917

1918

1919

1920

F. 0

3  
2

Emma Farms

1912

E. F.  
1912

E. F.  
1913

E. F.  
1914

1915

E. F.  
1916

E. F.  
1917

1918

1919

1920

F. 0

3  
2

**Emma Farm Association,**

**Harmarville, Pa.**

Telephone, 74 Springdale

CARMAN COVER JOHNSON, A.M., General  
Superintendent

**OFFICERS**

**Honorary President**

RAABI J. LEONARD LEVY

**President**

A. J. SUNSTEIN

**Vice-Presidents**

ISAAC KAUFMANN

J. WEIL

ROBERT GARLAND

**Treasurer**

JOHN D. BROWN

**Secretary**

W. M. SIGAL

**BOARD OF DIRECTORS**

Jacob Adolph  
Max L. Blum  
John D. Brown  
Aaron Cohen  
Chas. Dreifus  
Leon Falk  
Robert Garland  
Henry Jackson  
Henry Kaufmann  
Isaac Kaufmann  
Morris Kaufmann  
A. J. Kelly, Jr.  
W. B. Klee  
W. S. Kuhn  
Irwin F. Lehman

Rabbi J. Leonard Levy  
Dr. L. Litchfield  
Jos. H. Moore  
Chan. S. B. McCormick  
George S. Oliver  
Enoch Rauh  
Dr. J. P. Shaw  
Hugo Sidenberg  
W. M. Sigal  
Alex. C. Speyer  
A. J. Sunstein  
A. Leo. Weil  
J. Weil  
Samuel Weinhaus  
P. C. Williams

E.F.  
1912

(2)

1912

**TOTAL RECEIPTS OF THE EMMA FARM  
ASSOCIATION FROM JANUARY 1, 1912,  
TO JANUARY 1st, 1913**

**Fresh Air Department**

Membership Dues for 1911.....	\$ 290.00
Membership Dues for 1912.....	740.00
Special Donations.....	965.00
Received from Federation.....	4,500.00
Borrowed from E. J. K.....	1,500.00
Bequest from Annie Ferguson.....	100.00
	<hr/>
	\$8,095.00

**Farm School Department**

Subscription 1912, Isaac Kaufmann..	\$2,500.00
Subscription 1912, Morris Kaufmann	2,500.00
	<hr/>
	\$5,000.00

**TOTAL DISBURSEMENTS OF THE EMMA  
FARM ASSOCIATION FROM JANUARY  
1, 1912, TO JANUARY 1st, 1913**

**Fresh Air Department**

Maintenance .....	\$2,446.94
Farm Expense.....	133.58
Replacement and Repairs.....	195.71
Office Expense.....	413.92
House Salary.....	1,522.24
Office Salary.....	342.00
Farm Salary.....	536.00
House Fixtures.....	906.98
Buildings and Improvement.....	331.47
Insurance.....	744.52
Mrs. Smith's Account.....	630.00
	<hr/>
	\$8,203.36

(3)

1912

**Farm School Department**

Maintenance .....	\$1,120.33
Farm Expense.....	226.27
Replacement and Repairs.....	157.26
Office Expense.....	70.91
House Salary.....	604.91
Farm Salary.....	1,514.27
Office Salary.....	40.00
House Fixtures.....	36.59
Farm Fixtures.....	3.80
Buildings and Improvements.....	241.48
	<hr/>
	\$4,015.82

Wm. M. Sigal,  
Secretary.

**TOTAL DISBURSEMENTS OF THE EMMA  
FARM ASSOCIATION FROM JANUARY  
1, 1912, TO JANUARY 1st, 1913**

**Fresh Air Department**

Maintenance .....	\$2,446.94
Farm Expense.....	133.58
Replacement and Repairs.....	195.71
Office Expense.....	413.92
House Salary.....	1,522.24
Office Salary.....	342.00
Farm Salary.....	536.00
House Fixtures.....	906.98
Buildings and Improvement.....	331.47
Insurance.....	744.52
Mrs. Smith's Account.....	630.00
	<hr/>
	\$8,203.36

E.F.  
1913

E.F.  
1914

1915

E.F.  
1916

E.F.  
1917

1918

1919

1920

F. 0

3  
2

E.F.  
1912

(4)

TOTAL RECEIPTS ON THE EMMA FARM  
ASSOCIATION FROM JANUARY 1, 1912  
TO JANUARY 1st 1913

Fresh Air Department  
Membership Dues for 1912  
Membership Dues for 1913  
Partial Donations  
Received from Federated  
Harrisburg  
Harrisburg

Yankee School Department  
Subscription 1912, Isaac Kaufmann  
Subscription 1913, Morris Kaufmann

TOTAL DISBURSEMENTS OF THE EMMA  
FARM ASSOCIATION FROM JANUARY  
1, 1912 TO JANUARY 1st 1913

Fresh Air Department  
Maintenance  
Farm Expenses  
Repairs and Repairs  
Office Expenses  
Office Salary  
Farm Salary  
House Expenses  
Buildings and Improvements  
Insurance  
Miscellaneous

Emma Farm

(5)

1913

Emma Farm Association  
Harmarville, Pa.

Telephone, 74 Springdale

OFFICERS

Honorary President

RABBI J. LEONARD LEVY

President

A. J. SUNSTEIN

Vice-Presidents

ISAAC KAUFMANN

J. WEIL

ROBERT GARLAND

Treasurer

JOHN D. BROWN

Secretary

W. M. SIGAL

BOARD OF DIRECTORS

Jacob Adolph                      Dr. L. Litchfield  
Max L. Blum                        Jos. H. Moore  
John D. Brown                     Chan. S. B. McCormick  
Aaron Cohen                       Eugene O'Neil  
Chas. Dreifus                       George S. Oliver  
Leon Falk                          A. L. Rauh  
Robert Garland                     M. Rothschild  
Henry Kaufmann                   Dr. J. P. Shaw  
Isaac Kaufmann                    W. M. Sigal  
Morris Kaufmann                   Alex. C. Speyer  
W. B. Klee                          A. J. Sunstein  
W. S. Kuhn                         A. Leo Weil  
Irvin F. Lehman                    J. Weil  
Rabbi J. Leonard Levy             Samuel Weinhaus  
P. C. Williams

E.F.  
1913

E.F.  
1914

1915

E.F.  
1916

E.F.  
1917

1918

1919

1920

F. 0

3  
2

E. F.  
1912

E. F.  
1913

1913

FINANCIAL STATEMENT EMMA FARM ASSOCIATION, FROM JANUARY 1, 1913, TO JANUARY 1, 1914

RECEIPTS

Federation .....	\$ 5,000.00
Donations for 1913 .....	7,300.00
Contributions for 1913.....	183.00
Dues for 1911-12-13-14.....	395.00
Merchandise .....	150.23

\$13,028.23

DISBURSEMENTS

Farm Expense .....	\$ 1,179.78
Office Expense .....	289.51
Office Salary .....	441.15
House Fixtures .....	346.72
Maintenance .....	4,630.33
Building and Improvements .....	2,567.58
Replacing and Repairs .....	342.72
Insurance .....	25.00
Farm Salary .....	1,890.00
Farm Fixtures .....	79.51
House Salary .....	2,658.33

Disbursements .....	\$14,450.63
Receipts .....	13,028.23

Deficit .....

Wm. M. Sigal,  
Secretary.

1913

PRESIDENT'S REPORT

The past year was a very successful year for the Emma Farm Association. The first beneficiaries for the season of 1913 were taken out to the Farm on June 16th, and the Farm was closed for beneficiaries on September 12th. During this period we cared for 915 mothers, babies and children. We furnished to the Fresh Air beneficiaries during the season 24,602 meals, and to the household, including the farmers and the farm school boys, 7,975 meals, or a total of 32,577 meals.

During the past year we completed raising and repairing of the farm house, completed the equipment of the Farm with needed machinery, built a tool and implement shed, a new concrete intake for the swimming pool, pruned all the fruit trees, and made other needed improvements on the Farm, so that the physical condition and the equipment of the Farm is now better than it has ever been.

Our principal beneficiaries are furnished by the United Hebrew Relief Association and the Irene Kaufmann Settlement, and during the first two weeks in June and the first two weeks in September we accommodated from forty to sixty mothers and their younger children, and during July and August we accommodated, in relays, one hundred and forty children for two weeks each. We anticipate even a more successful season during this coming summer than last year.

A. J. Sunstein,  
President.

E. F.  
1914

1915

E. F.  
1916

E. F.  
1917

1918

1919

1920

F. 0

3

2



E. F.  
1912

8

E. F.  
1913

Jewish Home for the Aged  
Breakfasting Avenue  
Bel. Phone. 1628 Schenley, P. & A. Phone  
2354 Main  
REV. A. J. NEWMAN, Superintendent

OFFICERS

President  
HENRY JACOBSON  
Secretary  
RABBI A. M. ASHINSKY  
Honorary Vice-President  
MARKS  
First Vice-President  
JOSEPH KORNBLUM  
Second Vice-President  
D. S. OSGOOD

Treasurer

MANUEL COHEN  
Secretary  
MANUEL COHEN

DIRECTORS

Morris Hays  
Rabbi A. M. Ashinsky  
Jos. Benoit  
Mack  
Moses Oppenheimer  
D. S. Osgood  
Max Rosenber  
Sol Rosenblom  
Mayer Rosenblom  
Chas. H. Sachs  
L. I. Sachtelowsky  
Harriet Sadie  
Max Solomon  
A. C. Stein  
Max Topolsky  
Isaac Wertheimer  
Max Weissberg

Emma Farm  
1914

9

EMMA FARM ASSOCIATION

Harmarville, Pa.

Telephone, 74 Springdale

OFFICERS

Honorary President

RABBI J. LEONARD LEVY

President

A. J. SUNSTEIN

Vice-Presidents

ISAAC KAUFMANN

J. WEIL

A. L. RAUH

Treasurer

A. M. HAST

Secretary

W. M. SIGAL

BOARD OF DIRECTORS

Jacob Adolph  
Miss Lisa Blum  
Mrs. M. Bonn  
Aaron Cohen  
A. J. De Roy  
Chas. Dreifus  
Leon Falk  
I. W. Frank  
A. M. Hast  
Henry Kaufmann  
Isaac Kaufmann  
Morris Kaufmann  
Mrs. Morris Kaufmann  
W. B. Klee  
Rabbi J. Leonard Levy  
Dr. L. Litchfield  
Jos. H. Moore  
Chan. S. B. McCormick  
A. L. Rauh  
Max Rothschild  
Miss Julia Schoenfeld  
W. M. Sigal  
Nathaniel Spear  
Alex. C. Speyer  
Jos. Stadtfeld  
A. J. Sunstein  
A. Leo Weil  
J. Weil  
Samuel Weinhaus  
Miss Ella Wertheimer

E. F.  
1914

1915

E. F.  
1916

E. F.  
1917

1918

1919

1920

F. 0

3

2

E. F.  
1912

E. F.  
1913

E. F.  
1914

(10)

1914

**EMMA FARM ASSOCIATION**

**Financial Report**

**RECEIPTS**

Federation .....	\$5,000.00
Edgar Kaufmann Loan .....	500.00
Morris Kaufmann Loan .....	1,000.00
Isaac Kaufmann Loan .....	1,000.00
Donations (I. K.) .....	250.00
Contributions .....	137.00
Subscriptions .....	340.00
Merchandise .....	485.82
Irene Kaufmann Camp .....	118.85
	<hr/>
	\$8,831.67

**DISBURSEMENTS**

Farm Expense .....	\$1,392.39
Salary (Farm) .....	1,452.01
Salary (Household) .....	2,326.87
Farm Fixtures .....	26.70
Office Expense .....	114.64
House Fixtures .....	5.60
Maintenance .....	3,148.91
Building and Improvements .....	50.00
Replace. and Repairs .....	278.23
Kountze vs. Ally. Co. ....	307.75
	<hr/>
	\$9,103.10

WM. M. SIGAL,  
Secretary.

(11)

1914

**THE EMMA FARM**

The Emma Farm opened for its 1914 season on June 1st and closed September 15th. During this time it cared for 1004 persons, as follows:—

Mothers .....	98
Children .....	325
Campers .....	30
Visitors .....	24
Farmers .....	4
Household .....	14
Faculty .....	9

25,525 meals were served, 19,564 to Mothers and children, and 5,961 to Social Workers and Household help.

The beneficiaries enjoying the recreation facilities furnished by the Emma Farm were sent through the Irene Kaufmann Settlement, Soho Baths Settlement, Woods Run Industrial Home, and the United Hebrew Relief Association.

E. F.  
1915

E. F.  
1916

E. F.  
1917

1918

1919

1920

F. 0

3

2

E. F.  
1912

(12)

E. F.  
1913

E. F.  
1914

will be placed and after their release, sup-  
port them with legal advice and help to  
secure the means of earning an honorable liveli-  
hood. This Committee has also helped to  
form Study Classes at Kingsley House for  
Jewish children attending that institution.

The work of the JUVENILE COURT AND  
SOCIETY during the past year has been in  
co-operation with a number of other organi-  
zations and individuals. The Probation Of-  
ficer has charge of the Hill and Downtown  
districts and handles all cases in these dis-  
tricts regardless of race or religion. Out  
of a total of 1247 Juvenile Court cases in 1914,  
46 were Jewish. Preventive work was done  
with several hundred children, and many of  
them were found the causes which lead to  
delinquency and it was possible to correct  
them. Change of environment and the recti-  
fication of physical defects have been  
found to make a remarkable change in the  
life of a child.

THE CHILD LABOR COMMITTEE inspects  
Mills, Factories, Sweat Shops, etc., where  
children under age-working limit are em-

Emma Farm

(13)

1915

**EMMA FARM ASSOCIATION**

Harmarville, Pa.

Telephone, 74 Springdale

**OFFICERS**

**Honorary President**

RABBI J. LEONARD LEVY

**President**

A. J. SUNSTEIN

**Vice-Presidents**

ISAAC KAUFMANN

**J. WEIL**

A. L. RAUH

**Treasurer**

A. M. HAST

**Secretary**

W. M. SIGAL

**BOARD OF DIRECTORS**

Jacob Adolph	Dr. L. Litchfield
Miss Lisa Blum	Jos. H. Moore
Mrs. M. Bonn	Chan. S. B. McCormick
Aaron Cohen	A. L. Rauh
A. J. De Roy	Max Rothschild
Chas. Dreifus	Miss Julia Schoenfeld
Leon Falk	W. M. Sigal
I. W. Frank	Nathaniel Spear
A. M. Hast	Alex. C. Speyer
Henry Kaufmann	Jos. Stadfeld
Isaac Kaufmann	A. J. Sunstein
Morris Kaufmann	A. Leo Weil
Mrs. Morris Kaufmann	J. Weil
W. B. Klee	Samuel Weinhaus
Rabbi J. Leonard Levy	Miss Ella Werthelmer

E. F.  
1915

E. F.  
1916

E. F.  
1917

1918

1920

F. 0

32

E. F.  
1912

E. F.  
1913

E. F.

E. F.  
1915

(14)

1915

**EMMA FARM ASSOCIATION**

**Financial Report**

**RECEIPTS.**

Federation .....	\$5,000.00
Subscriptions .....	180.00
Contributions .....	22.00
From Isaac Kaufmann .....	2,500.00
From Edgar J. Kaufmann .....	500.00
Merchandise (Products sold) .....	310.85
Irene Kaufmann Settlement Camp ..	190.51

**\$8,703.36**

**DISBURSEMENTS**

Farm Expense .....	\$ 1,630.55
Farm Salary .....	900.99
Office Expense .....	11.00
House Fixtures .....	99.89
Maintenance .....	3,495.91
Building and Improvements .....	36.50
House Salary .....	2,052.34
Replacement and Repairs .....	1,188.72
Ground Improvements .....	635.62

**\$10,051.52**

**WM. M. SIGAL,**  
Secretary.

(15)

1915

**EMMA FARM ASSOCIATION**

**From Miss Schoenfeld's Report**

We began work at Emma Farm on May 15. Miss Sidonie Beckhofer, who for eight years had been housekeeper at the Young Women's Union at Phila., took charge of the House and by June 1, it was ready for occupancy. Every room was renovated and the entire place painted and put in repair.

On June 3, we took out our first party, made up of mothers and children selected by the Hebrew Relief, also the children from the Irene Kaufmann Fresh Air School. These children were under the direction of Miss Smith, their teacher, and Miss Kelly, the School nurse. During June 253 were cared for, 75 mothers, 149 children under school age, 28 children of school age, and two young women who were convalescents.

The first two weeks of July were given over to the Soho Settlement. The Irene Kaufmann Settlement arranged parties for the remainder of the summer. 125 children were sent by the Soho Settlement. The Settlement supplied one volunteers boys' club worker. 276 children, with an additional camping group of 33 young people over 14, making a total of 309, were at the Farm in July. In August, 301 children were cared for with an additional group of 23 in camp, making a total of 324. In September, the Soho and Woods Run Settlements sent 41 mothers and 62 children, the Hebrew Relief sent two mothers and three children; the Irene Kaufmann Settlement sent one male convalescent, making a total of 109 persons for the month. The senior boys camped until Sept. 10. The attendance for the entire summer was 1006.

Eighteen children were sent home for incorrigibility, while 31 children left before their vacation was over, on account of homesickness.

E. F.  
1916

E. F.  
1917

1918

1920

F. 0

3  
2

E. F.  
1912

E. F.  
1913

E. F.

E. F.  
1915

(16)

1915

The Settlement extended the services of four of its paid workers. 22 volunteers gave their services for one or two weeks. The entire number at the farm, including the help was 1036. 36,251 meals were served throughout the season. Seven maids and one additional helper in August, and an engineer and handy man, comprised the force of servants.

A Playground program was prepared by the workers, and the children had an instructive as well as happy time. The day was divided into periods, so that the children had an opportunity for free play, organized and directed play, and some occupation work. Special festivities were planned for each evening from 7:00 to 8:30. The children made their own beds, and some helped with the dishes.

The children were weighed on arrival, and again on day of departure. Eighty per cent of the children gained in weight. A few children who had been sent by physicians were kept from four to six weeks, and were sent home entirely restored to health.

I believe that the summer was most profitable. Many of the neighbors sent word this year that they were grateful to the workers, because this was the first year in five that their fruit trees had not been stripped, and that the farms had not been trespassed. There were no accidents, and very little illness. On July 25, "Hospitality Day" was observed, and about 150 visitors found their way to the farm.

Special entertainments were planned for alternate Thursdays for the children during the season.

Emma Farm  
1916

(17)

### EMMA FARM ASSOCIATION

Harmarville, Pa.

Telephone 122 Springdale

#### OFFICERS

Honorary President:

RABBI J. LEONARD LEVY

President

EDGAR J. KAUFMANN

Vice-Presidents

ISAAC KAUFMANN

A. L. RAUH

Treasurer

A. M. HAST

Secretary

W. M. SIGAL

#### BOARD OF DIRECTORS

Jacob Adolph	Rabbi J. Leonard Levy
Louis J. Affelder	Jos. H. Moore
Miss Lisa Blum	Chan. S. B. McCormick
Mrs. M. Bonn	A. L. Rauh
Aaron Cohen	Max Rothschild
A. J. De Roy	Miss Julia Schoenfeld
Chas. Dreifus	W. M. Sigal
Leon Falk	Nathaniel Spear
I. W. Frank	Alex. C. Speyer
A. M. Hast	Jos. Stadtfeld
Henry Kaufmann	A. J. Sunstein
Isaac Kaufmann	A. Leo Weil
Morris Kaufmann	J. Weil
Mrs. Morris Kaufmann	Samuel Weinhaus
W. B. Klee	Miss Ella Werthelmer

E. F.  
1916

E. F.  
1917

1918

1920

F. 0

3  
2

E. F.  
1912

E. F.  
1913

E. F.

E. F.  
1915

E. F.  
1916

(18)

1916

**EMMA FARM ASSOCIATION**

**SUMMER, 1916**

**From the Irene Kaufmann Settlement Report**

The Irene Kaufmann Settlement, co-operating with the Emma Farm Association, undertook the management and direction of the Emma Farm. Registrations for the Farm were made during the months of May and June. As usual, more children registered than could possibly be taken care of during the summer. After registration, investigations and visits to the homes were made to determine which children should be selected. These visits were made by workers of the Settlement. After the children were selected, before being sent to the Farm, they were required to be examined by a physician, to prevent anyone with a contagious or infectious disease being sent to the Farm. Cleanliness was also insisted upon, and before leaving for the Farm, every one had to take a bath.

The Farm was opened on the 13th of June and remained open until the first of September. Because of the prevalence of Infantile Paralysis in the city, it was deemed advisable to close Emma Farm on September 1st.

Six groups of approximately 150 persons each, were taken out for periods of twelve days. The first party consisted of the children of the Irene Kaufmann Open Air School and mothers with their babies, as selected by the United Hebrew Relief Association. The second group was composed of persons from the Soho Baths and Settlement, and the other four parties were children from the neighborhood of the Irene Kaufmann Settlement. In all 902 persons were given an outing, and nearly 30,000 meals were served throughout the season.

**EMMA FARM ASSOCIATION**

Harmarville, Pa.

SIDNEY A. TELLER, Managing Director

**OFFICERS**

**President**

EDGAR J. KAUFMANN

**Vice Presidents**

ISAAC KAUFMANN

A. L. RAUH

NATHANIEL SPEAR

**Treasurer**

A. M. HAST

**Secretary**

W. M. SIGAL

**BOARD OF DIRECTORS**

Jacob Adolph	Mrs. Morris Kaufmann
Louis J. Affelder	W. B. Klee
Miss Lisa Blum	Jos. H. Moore
Mrs. M. Bonn	Chan. S. B. McCormick
Aaron Cohen	A. L. Rauh
A. J. De Roy	Max Rothschild
Chas. Dreifus	W. M. Sigal
Leon Falk	Nathaniel Spear
I. W. Frank	Alex. C. Speyer
Mrs. Louis Gordon, Jr.	Jos. Stadtfeld
A. M. Hast	A. J. Sunstein
Henry Kaufmann	A. Leo Weil
Isaac Kaufmann	Samuel Weinhaus
Miss Ella Wertheimer	

Emma Farm  
1917

(19)

E. F.  
1917

1918

1920

F. 0

E. F.  
1912

E. F.  
1913

E. F.

E. F.  
1915

E. F.  
1916

E. F.  
1917

(20)

1917

EMMA FARM ASSOCIATION

Financial Report

RECEIPTS.

From Federation .....	\$ 6,500.00
From Isaac Kaufmann .....	2,000.00
Subscriptions .....	237.00
Merchandise Sold .....	880.73
Fees from Children .....	555.82
<b>Total Receipts .....</b>	<b>\$10,173.55</b>

DISBURSEMENTS.

Farm Expense .....	\$ 1,339.74
General Expense .....	22.50
Farm Salaries .....	904.55
House Fixtures .....	207.76
House Salaries .....	1,231.10
Maintenance .....	3,644.77
Insurance .....	851.35
Entertaining Expenses .....	60.00
Office Expense .....	198.06
Replacement and Repairs .....	217.85
Overdraft, January 1st, 1917 .....	1,127.04
<b>Total Disbursements .....</b>	<b>\$ 9,804.72</b>
Cash Balance, December 31st, 1917 .....	368.83
	<b>\$10,173.55</b>

WM. M. SIGAL, Secretary.

(21)

1917

EMMA FARM ASSOCIATION

Summer 1917

Extracts From the Managing Director's Report

The Resident Director of the Irene Kaufmann Settlement undertook the direction and management of the summer work at the Emma Farm Association during the year 1917. The camp was under the direct supervision of Miss Etta Freedlander and Mrs. Sidney A. Teller. The work at the city end was under the direction of Miss Anna B. Heldman. Each child before being sent to the farm was given a bath and physical examination. The physical examination was made gratis by Dr. Bessie Greenberger.

During the season 637 children and 17 mothers enjoyed a vacation on the farm of twelve days' duration. The number of meals served totaled 25,579. Not included in the foregoing, ten children were sent home for breaking rules, three children were sent home because of illness; 15 left shortly after arrival because of homesickness. The children arrived at the farm in time for the noon meal on Monday, and left twelve days later, on Friday, after breakfast, arriving back in Pittsburgh in time for the noon meal at their homes.

Several innovations this year seem worthy of note. In the first place, all mothers and children who could afford it, paid up to \$2.00 for the twelve days' stay. In needy cases this amount was lowered or cancelled. However, after paying all transportation charges, the amount of money turned back to the Emma Farm Association amounted to \$555.82. Secondly, there was no private caretakers' dining room, as in previous years. The teachers ate with the children. We found we learned to know the children in a more intimate way and this policy made for better comradeship. Thirdly, the high price of food necessitated some scheme to eliminate waste, hence cake prizes were offered this year to those tables having no waste food at all during the entire two weeks. Some weeks three tables at which were seated fifteen

F.  
23-  
24

F.  
926

F.  
27

E. F.

E. F. 8  
1918

1919

1920

F.  
0  
3  
2

E. F.  
1912

E. F.  
1913

E. F.

E. F.  
1915

E. F.  
1916

E. F.  
1917

(22)

1917

children each, had no waste, not even a crumb of bread, during the two weeks' stay. During the last trip, which was composed of older children, five tables, which is one-half of the dining-room, won cakes. Several mothers told us that the idea was carried by the youngsters into their homes in the city. The whole institution was run on a basis of economy with efficiency and the elimination of waste where possible. Fourth, "court" was held every evening. "Court" was the place where infractions of the rules were heard, as well as any complaint of one child against another. One of the workers acted as judge and the juries were composed of the children themselves. Some very rigid sentences were imposed for serious offences and this helped to keep the proper discipline at the farm. Fifth, the last evening of the children's stay was given over to an entertainment called a "Circus" by the children. The talent and ingenuity shown on these occasions was very praiseworthy.

SIDNEY A. TELLER,  
Managing Director.

Emma Farm  
1918

(23)

**EMMA FARM ASSOCIATION**

Harmarville, Pa.

SIDNEY A. TELLER, Managing Director

**OFFICERS**

**President**

EDGAR J. KAUFMANN

**Vice Presidents**

ISAAC KAUFMANN

A. L. RAUH

NATHANIEL SPEAR

**Treasurer**

A. M. HAST

**Secretary**

W. M. SIGAL

**BOARD OF DIRECTORS**

Jacob Adolph	Mrs. Morris Kaufmann
Louis J. Affelder	W. B. Klee
Miss Lisa Blum	Jos. H. Moore
Mrs. M. Bonn	Chan. S. B. McCormick
Aaron Cohen	A. L. Rauh
A. J. De Roy	Max Rothschild
Chas. Dreifus	W. M. Sigal
Leon Falk	Nathaniel Spear
I. W. Frank	Alex. C. Speyer
Mrs. Louis Gordon, Jr.	Jos. Stadtfeld
A. M. Hast	A. J. Sunstein
Henry Kaufmann	A. Leo Weil
Isaac Kaufmann	Samuel Weinhaus

Miss Ella Wertheimer

F.  
23-  
14

E. F.  
1926

7  
927

E. F.

E. F. 38  
1918

1919

1920

F.  
0

3  
2



E.F.  
1912

E.F.  
1913

E.F.

E.F.  
1915

E.F.  
1916

E.F.

E.F.  
1918

(24)

1918

EMMA FARM ASSOCIATION

Financial Report

RECEIPTS

Cash Balance in Bank, January 1, 1918.....	\$ 368.83
Farm Credits:	
1. Sale of Farm Equipment, machinery and stock.....	\$686.28
2. Farm Rental for year.....	250.00
Total Farm Receipts.....	936.28
Subscriptions and Donations:	
*3. Federation of Jewish Philanthropies .....	\$6,500.00
4. Miscellaneous Subscriptions and Donations .....	215.00
Total Subscriptions and Donations .....	6,715.00
Maintenance Credits:	
5. Fees from Children.....	\$713.30
6. Burglary Compensation .....	278.60
7. Miscellaneous Credits .....	149.47
Total Maintenance Credits.....	1,141.37
TOTAL RECEIPTS FOR YEAR 1918..	\$9,161.48

\*While the Federation appropriated \$6,500 for regular work, and \$1,500 for repairs, or a total of \$8,000, only \$6,500 was drawn from the Federation.

(25)

1918

DISBURSEMENTS.

Farm:

1. Farm Expense .....	\$466.09
2. Farm Salary .....	120.00
3. Farm Fixtures .....	2.07
Total Farm Expense.....	\$ 588.16
Improvements:	
4. Buildings and Improvements.....	\$1,754.17
5. Replacements and Repairs.....	89.88
Total Improvements.....	1,844.05

Maintenance General:

6. Maintenance .....	\$4,600.35
7. House Salary .....	1,630.07
8. Office Expenses .....	212.02
9. Office Salary .....	178.35
Total General Maintenance.....	6,620.79
TOTAL DISBURSEMENTS .....	\$9,053.00
Balance in Bank, January 1, 1919.....	108.48
	\$9,161.48

A. M. HAST,  
Treasurer.

F.  
23-  
24

E.F.  
1926

F  
927

E.F.  
1928

E.F.  
1919

1920

F.  
28

F.  
32

E. F.  
1912

E. F.  
1913

E. F.

E. F.  
1915

E. F.  
1916

E. F.  
1917

E. F.  
1918

(26)

1918

EMMA FARM ASSOCIATION

Summer, 1918

Extracts from the Managing Director's Report.

The Resident Director of the Irene Kaufmann Settlement undertook the direction and management of the summer work of the Emma Farm Association during the year 1918. The camp was under the direct supervision of Mrs. Sidney A. Teller. The work at the city end was under the direction of Miss Anna B. Heldman. Each child before being sent to the farm was given a bath and physical examination. The Irene Kaufmann Settlement furnished the "overhead" for the Emma Farm Association at the city end of the work, without cost. This included the services of the Resident Director of the Settlement as Managing Director of the Farm; the investigation, registration, medical examination and shower baths of all persons sent to Emma Farm. The Settlement loaned part of its staff to the Emma Farm, secured all volunteers, and took care of the children until they reached the Farm. Practically all the work connected with the offices of Secretary and Treasurer were taken care of by the Resident Director.

Steps were taken on June 3d to open Emma Farm for the season, and on June 17th, the first group of mothers and infants arrived. The last group of children left the Farm on August 23d, and the Farm was closed August 27th. During this time 533 persons, not including the volunteers or caretakers, were given an outing of twelve days each, and a total of 21,602 meals were served on the premises.

Various difficulties, unusual and aggravated on account of the war, were encountered. There was difficulty in securing and keeping help; food and menu problems due to the rules and regulations of the Food Administrators; delays and uncertainty of transportation of supplies, and the hottest days for 37 years as a climax of eight weeks of no rain, causing a shortage of water, especially as regards the operation of the Swimming Pool. In spite of all

(27)

1918

this, due to the exertions, patience and perseverance of the Superintendent of Emma Farm, and such assistance as the Managing Director rendered, the Emma Farm was run successfully and operated every day of the above season, and the plans for 1918 carried through. Necessary repairs were made to the buildings, roofs, plumbing, carpentry work, etc.

The Managing Director recommended a year ago, that the farm part be leased as a great saving to the Association. Following this recommendation, the use of the farm or cultivated part of our property was leased out for three years, from March 1st, 1918. As a result of this, farm equipment, machinery and stock were sold for the net total of \$686.26. Previous to the leasing of the above, the Emma Farm Association was maintaining the farm part at a total net cost of approximately \$2,000 per year. This is giving a liberal value for all produce sold, and that used by the summer home. While the farm was not leased until March 1, 1918, and various things had to be done to satisfy the tenant, the cost this year of the farm part did not exceed \$350 net, or a saving this year over last year of \$1,906.13.

Following the principles of last year of making some charge to those who could pay, the Irene Kaufmann Settlement workers turned over \$713.30 net, collected from the children, to the Emma Farm Association. This is after paying all railroad fares, which were higher than last year, and all expenses in connection with packing and hauling of baggage, notification of children by postal card, etc. When the circumstances justified the children were sent free, and others paid only a nominal fee to cover railroad fare and baggage. The success this year of the plan, is due to it being in operation the second year, and thus being accepted more readily, and also through giving the children an incentive to save by the inauguration of the saving stamp plan worked out this year.

There were 106 beds available for children this year. It was pointed out last summer, that the Emma Farm Association maintained an over-crowded Institution, and a low standard of crowding three children into every two beds. It was recommended to take care of the same number of children this year as last year; that the play room be converted into a dormitory, and additional beds added. This not being done, the number of children this year per trip was reduced to the proper standard of "a bed for each child." In view of the developments of the

F.  
23-  
14

E. F.  
1926

7  
927

E. F.  
1928

E. F.  
1919

1920

F.

3  
2

E. F.  
1912

E. F.  
1913

E. F.

E. F.  
1915

E. F.  
1916

E. F.  
1917

E. F.  
1918

(28)

1918

season, this reduction was a big factor in preventing the closing of Emma Farm. The extreme hot weather and drought made for a limited, and at times, questionable water supply, especially as regards the Swimming Pool and the use of the inside toilets. To meet the situation, in addition to the reduction of the number of persons per trip, practically all the laundry was given out. To improve the sanitary conditions over last year, two of the out-houses were removed at the beginning of the season, and the third or last one, removed August 9th. Hypo-chloride of lime was added to the water of the swimming pool from time to time, and when possible, water from our well was added to the water in the swimming pool. The season was carried through successfully, but with a great deal of worry caused by the uncertainty of the water supply, which supply, if reduced below a certain point, would affect seriously the sanitary conditions that did exist, which were none too good.

The persons sent were well taken care of as to food; both as to quality and quantity. The record showed a total gain of 1,422 pounds, or an average gain of about three pounds. Aside from the physical care, the children and mothers had a good happy time in the best sense of the word. The girls spent part of each day in knitting, and Red Cross work, and contributed a beautiful ambulance robe of a red, white and blue design.

There is no doubt, but that ample facilities for summer outings and vacations should be provided by the philanthropic Jews of Pittsburgh, to those in the Community in need of same. Children, mothers, and babies need now, more than ever before, such outings as the Emma Farm Association has provided in the past. Investigations in various cities have shown, and doubtless the same conditions exist in Pittsburgh, that with the rise in prices of food and milk, there has been a curtailment of amount, as well as inferior quality of food used by persons in poorer circumstances. The raise in railroad rates has also curtailed for these people such outings, even formerly made at a sacrifice. Pittsburgh was also hard hit by the past epidemic of Spanish Influenza. A study of the effects of the influenza epidemic has given us the important facts that the persons who have been afflicted with influenza, no matter how slightly, are left in a weakened condition, and that unless unusual care is taken concerning food, diet, rest and fresh air, there is a grave danger of the development of pneumonia or

(29)

1918

tuberculosis. If the kind of preventive and constructive work which has been done by the Emma Farm Association in the past is discontinued; if persons are not sent to the country for an outing of two weeks with proper and sufficient food, etc., thus helping to build them up into stronger and healthier persons, then it is only natural that later our relief societies will have to assist in supporting those who are not strong enough to work, or have sickness in their family, or have developed tuberculosis. It is, therefore, urged that the kind of work which the Emma Farm Association has been doing in the past, the value and benefit of which work cannot be questioned, be continued in the future.

The success of the work of the Emma Farm Association for the year 1918, which year is considered one of the most successful seasons since the work has been inaugurated, was due to the work of the Resident Staff at Emma Farm, to the assistance given by the volunteers, and the services rendered by the Staff of the Irene Kaufmann Settlement. We take this opportunity of acknowledging and appreciating this co-operation.

SIDNEY A. TELLER,  
Managing Director.

Charles I. Astor  
George A. M. Ashburn  
John Bennett  
K. Berkman  
James Bowdler  
John H. Cohen  
Chas. Davis  
I. H. Frank  
Charles Friedberg  
Henry Friedman  
J. H. Gerson  
Meyer Rosenbaum  
E. H. Sisson  
Ludwig Solomon  
A. Taboroff  
Philip Harrison  
Adolph Horowitz  
Morris Friedberg  
E. M. Goldsmith  
I. Goldstein  
J. M. Friedman  
Meyer Rosenbaum  
E. H. Sisson  
Ludwig Solomon  
A. Taboroff

F.  
23-  
14

E. F.  
1926

E. F.  
1927

E. F.  
1928

E. F.  
1919

1920

F.  
0

32

E. F.  
1912

E. F.  
1913

E. F.

E. F.  
1915

E. F.  
1916

E. F.  
1917

E. F.  
1918

(30)

Emma Farm  
1919

(31)

**EMMA FARM ASSOCIATION**

Harmarville, Pa.

SIDNEY A. TELLER, Managing Director.

**OFFICERS**

**President**

EDGAR J. KAUFMANN

**Vice Presidents**

ISAAC KAUFMANN

A. L. RAUH

NATHANIEL SPEAR.

**Treasurer**

A. M. HAST

**Secretary**

W. M. SIGAL

**Board of Directors**

Jacob Adolph	Mrs. Morris Kaufmann
Louis J. Affelder	W. B. Klee
Miss Lisa Blum	Jos. H. Moore
Mrs. M. Bonn	Chan. S. B. McCormick
Aaron Cohen	A. L. Rauh
A. J. De Roy	Max Rothschild
Chas. Dreifus	W. M. Sigal
Leon Falk	Nathaniel Spear
I. W. Frank	Alex. C. Speyer
Mrs. Louis Gordon, Jr.	Jos. Stadfeld
A. M. Hast	A. J. Sunstein
Henry Kaufmann	A. Leo Weil
Isaac Kaufmann	Samuel Weinhaus
	Miss Ella Wertheimer

E. F.  
1926

E. F.  
1927

E. F.  
1928

E. F.  
1919

1920

F.

3  
2

E. F.  
1912

E. F.  
1913

E. F.

E. F.  
1915

E. F.  
1916

E. F.  
1917

E. F.  
1919

(32)

1919

EMMA FARM ASSOCIATION

Financial Report

RECEIPTS

Cash balance in bank, January 1, 1919.....	\$ 108.48
Farm Credits:	
1. Farm rental for part of year.....	100.00
Improvements Credits:	
2. Replacement and repairs (burglary compensation) .....	21.50
Subscriptions and donations:	
3. Federation of Jewish Philanthropies....	5,300.00
Maintenance credits:	
4. Fees from women.....	\$306.03
5. Burglary compensation.....	128.50
6. Sale of camp equipment.....	60.00
7. Miscellaneous .....	47.96
Total maintenance credits.....	542.49
Total receipts for year 1919.....	\$6,072.47

DISBURSEMENTS

Improvements:	
1. Buildings and improvements...\$	400.00
2. Replacement and repairs.....	260.58
	\$ 660.58
Maintenance general:	
3. Maintenance .....	\$3,914.60
4. House salary .....	1,173.66
5. Office expense .....	68.55
6. Office salary .....	255.00
	5,411.81
Total disbursements for year 1919....	\$6,072.39
Balance in bank, January 1, 1920.....	.08
	\$6,072.47

A. M. HAST,  
Treasurer.

(33)

1919

EMMA FARM ASSOCIATION

Season 1919

Extracts from Managing Director's Report

At the special meeting of the Emma Farm Association, held Monday, May 5th, 1919, it was decided that the work of the Association for the summer, 1919, take the form of caring for mothers and small children only, such work to be carried on at Emma Farm, limiting the number per trip to the total as determined by the amount of water supply, the season to consist of five trips.

Following this meeting, the Managing Director took steps to put the Emma Farm in shape for the season and to organize the staff. It was necessary, the swimming pool not being usable, on account of the lack of other sufficient bathing facilities, to put in a special hot water heater and to connect same up with certain bath tubs at the Farm. Besides this, some other changes and additions to the plumbing were made so as to provide adequate bathing facilities for the mothers and the babies. This matter involved an expenditure of about \$400.00, but the addition assisted materially in the success of the season's work. After a great deal of trouble due to scarcity of help, etc., a staff was secured and Emma Farm was opened for the first group on Monday, June 23rd, and the last or fifth group returned on Friday, August 29th. The Farm was closed for the season, September 4th.

Because of the influenza epidemic of the previous fall and winter, an effort was made to reach those first in need of an outing, from a health standpoint, taking first those least able to pay for such an outing. A general letter was sent to the United Hebrew Relief Association and to the schools of the neighborhood. All recommendations of the United Hebrew Relief Association were given first consideration and then the others. Mothers with small children, infants, were also sought out. No older children were taken except when the mother was sent and it was impossible to leave the children at home or with neighbors. While eliminating entirely groups of boys and girls as such, it was soon found that a need existed for summer outings for more persons than the capacity at Emma Farm. As will be recalled, the summer of 1919 was an

E. F.  
1923-  
1924

E. F.  
1926

E. F.  
1927

E. F.  
1928

E. F.  
1929  
1920

E. F.  
1930  
1932

E. F.  
1912

E. F.  
1913

E. F.

E. F.  
1915

E. F.  
1916

E. F.

E. F.  
1919

(34)

1919

unusually wet one, there being an excess of five inches of rain in August above normal, so we had an adequate water supply at all times for all persons who were at the Farm. A total of 314 persons were sent during the summer, not including the help or volunteers. Because of insufficient capacity many persons who should have been sent were not sent at all, and many mothers and small children who should have been given a full month in the country in order to recuperate and regain their health were each limited to one outing of eleven days. A registered nurse was in attendance at the Farm all summer to look after the small babies, and special attention was given to see that all who went out to the Farm gained in health. Wholesome food was supplied, plenty of eggs, milk, etc. During the summer a partial record was kept of some persons when they arrived and when they left, and the reports of the Superintendent indicates a total gain of weight of 420 pounds during the summer from the records kept. A total of 13,347 meals were served during the summer.

As in previous years, the Irene Kaufmann Settlement made all the investigations necessary, took care of the registration, bathing the persons going to the Farm, notification of these people, transportation of baggage back and forth to the depot; in fact, took care of the mothers and children until they arrived at the Farm. All this was done without any extra cost to the Emma Farm Association. When it was found that certain individuals could pay in part or whole for their outing, money was collected by the workers of the Settlement, and a total of \$306.03 was turned back to the Association, after all expenses for postal card notices, cost of transportation of baggage back and forth to the station, and the cost of transportation of persons back and forth to the Emma Farm were paid. The Irene Kaufmann Settlement gave a leave of absence to Miss Anna Skolsky for the summer and she served in the capacity of Superintendent of the Emma Farm. The Settlement also secured necessary volunteers who acted as caretakers and entertainers of the mothers and small children during their stay at Emma Farm. The following persons gave volunteer service during the summer:

Miss Sarah Abrams	Miss Ida T. Richman
Miss Rebecca Bornstein	Miss Jeannette Richman
Miss Elizabeth Childs	Miss Minnie Sachs
Miss Jeannette Childs	Miss Eva Shamburg
Miss Anna Firestone	Miss Nettie Silverberg
Miss Freda A. Levine	Miss Ida Zwilling
Miss Lillian Firestone	Mrs. Jacob Shaffman

(35)

1919

The Resident Director of the Irene Kaufmann Settlement gave his services gratis as Managing Director of Emma Farm, and in addition to the duties of that position, also directed and supervised all the clerical and office work in connection with the duties of Secretary and Treasurer of the Emma Farm Association.

From every standpoint—financial, monies expended, benefits to persons served, lives saved, health improved—the work of the Emma Farm Association for the past summer has been a success and worth while. It is to be hoped that this work, which has so repeatedly proved itself beneficial and of value to the Jewish Community of Pittsburgh, will be continued in the future at such a place or places and on such a scale, that all persons in need of outings can be served during the course of the summer season.

SIDNEY A. TELLER,  
Managing Director.

E. F.

1926

E. F.

1927

E. F.

1928

E. F.

E. F.  
1920

1929

F.

30

32

E.F.  
1912

E.F.  
1913

E.F.

E.F.  
1915

E.F.  
1916

E.F.  
1917

E.F.

E.F.  
1919

(36)

JEWEL HOME FOR THE AGED  
Bryn Mawr, Pa.  
Call Phone: 3112 Schuylk  
REV. A. J. NEWMAN, Superintendent

OFFICERS

President  
HENRY JACKSON

Honorary President  
MIRIAM A. M. ASHINSKY

Zonetary Vice President  
MARKS BROTHMAN

First Vice President  
JOSEPH KATZBLUM

Second Vice President  
D. S. ROSSCOE

Treasurer  
MIRIAM A. M. ASHINSKY

Secretary  
KARL COHEN

Directors

Charles J. Aaron	Chas. Davis
Isabel A. M. Ashinsky	J. H. Drank
Joe Berman	Henry Jackson
Stefanovic	Mr. Kagan
Miriam Brothman	J. M. Korman
Julius H. Katz	L. Katsch
Joseph Katsch	Mr. J. Levin
Joseph Katsch	William Levy
Joseph Katsch	Charles Livingstone
Joseph Katsch	C. M. Oppenstein
Washington, Pa.	D. E. Osgood
Paul Hermann	David Rosenberg
David Hest	Chas. H. Sachs
Max Horvitz	A. Sasse
Henry Jackson	Oscar Sidel
Joe Katsch	Isaac Sidel
Maurice J. Landay	E. Sheinberg
Mr. Landay	S. Simon
Joe Laskusky	Julius Weiss
Mr. Homestead	

(37)

E.F.  
1923-  
1924

E.F.  
1926

E.F.  
1927

E.F.  
1928

E.F.  
1929

F.

32

EMMA FARM ASSOCIATION

Association Account

Federation Report

Emma Farm

1920.

Club Dues	400.00
Home Sales	300.00
Club Expenses	20.00
Transfer Balance	1,000.00

Total Receipts for 1920

Expenses and Disbursement Account

By Order of Association for Bill of Prop.	100.00
By Order of Association for Bill of Prop.	100.00
Total Disbursements for 1920	200.00

DISBURSEMENTS

For Lease of Emma Farm Property	100.00
For Option on Emma Farm Property	100.00
For Purchase of Emma Farm Property	100.00
Expenses for Emma Farm & 1/2 Acre	100.00

Total Disbursements for 1920

Balance December 31, 1920 in the hands of  
Emma Farm Association

E. F.  
1912

E. F.  
1913

E. F.

E. F.  
1915

E. F.  
1916

E. F.

E. F.

E. F.  
1920

(38)

1920

**EMMA FARM ASSOCIATION**

Harmony, Pa.

SIDNEY A. TELLER, Managing Director

**OFFICERS**

**Honorary President**

ISAAC KAUFMANN

**President**

EDGAR J. KAUFMANN

**Vice President**

A. L. RAUH

**Treasurer**

A. M. HAST

**Secretary**

W. M. SIGAL

**BOARD OF DIRECTORS**

Louis J. Affelder	Mrs. Morris Kaufmann
Verner Callomon	Miss Ruth Levy
Leon Falk	Edwin C. May
Le B. Foster	Miss Nannie Oppenheimer
Sam K. Frank	A. J. Sunstein
Abbi S. H. Goldenson	Ferdinand T. Weil
Nathan Jacobs	Miss Ella Wertheimer
Ludwig B. Bernstein, Ph. D., Ex-officio	

1920

(39)

**EMMA FARM ASSOCIATION**

**Financial Report**

**Federation Account:**

**RECEIPTS**

Cash Balance in Bank January 1, 1920.....	\$ .08
From Federation of Jewish Philanthropies.....	2,400.00
From Sale of Old Wagon.....	35.00

Total Receipts for 1920.....\$ 2,435.08

**DISBURSEMENTS**

Office Salaries .....	\$ 450.00
House Salaries .....	300.00
Office Expenses .....	56.90
General Expenses .....	1,628.18

Total Disbursements for 1920.....\$ 2,435.08  
No Balance December 31, 1920.

**Building and Improvement Account:**

**RECEIPTS**

By Edgar J. Kaufmann, from Sale of Property at Harmarville, Pa.....\$15,000.00

Total Receipts for 1920.....\$15,000.00

**DISBURSEMENTS**

For Lease of Beam Heir Property.....	\$ 1.00
For Option on Beam Heir Property.....	300.00
For Purchase of Beam Heir Property and Expense by Potter Title & Trust Co.....	9,000.00

Total Disbursements for 1920.....\$ 9,301.00  
Balance December 31, 1920 in the hands of Edgar J. Kaufmann, President .....\$ 5,699.00

E. F.  
1923-  
1914

E. F.  
1926

E. F.  
1927

E. F.  
1928

E. F.  
1929

30

32



E. F.  
1912

E. F.  
1913

E. F.

E. F.  
1915

E. F.  
1916

E. F.  
1917

E. F.

E. F.

E. F.  
1920

(40)

1920:

EMMA FARM ASSOCIATION

Extracts From the Managing Director's Report

At the beginning of the year 1920 the Emma Farm Association had before it the report of its Plan and Scope Committee, which report recommended that the site at Harmarville, Pa., be abandoned; it was deemed desirable and necessary that the work of the Association be continued. Further, the Committee recommended, for the consideration of the Association a site on the Connoquenessing Creek, consisting of about twenty-four (24) acres. It was the sense of the Association that the recommendations of the Plan and Scope Committee should be carried out. No work was to be undertaken at Harmarville during the 1920 season, and if no other site could be obtained and equipped that the Association would have no activities this year.

After a great deal of effort a purchaser was found and the property at Harmarville, Pa., disposed of for a consideration of \$15,000. The Morris Knowles Company, Inc., was employed to examine the recommended site near Harmony, Pa., and to render a report regarding the desirability of the property for the intended purpose, and the approximate cost of erecting suitable buildings on the grounds. This report (August 9th, 1920), incorporating the ideas of the Plan and Scope Committee as to the general size and kind of buildings contemplated, stated "It has become increasingly evident to us that the land under consideration not only presents no unusual difficulty of development, but that it would serve as an exceptionally favorable site for such a Camp as is proposed. \* \* \* Therefore, we have no hesitancy in recommending this site for your favorable consideration. \* \* \* Our estimates indicate that the total cost of the Camp, to provide for 200 persons, would amount to about \$100,000, including land."

On November 30th, 1920, a joint agreement was entered into by the Emma Farm Association, the Federation of Jewish Philanthropies of Pittsburgh and Mr. Isaac Kaufmann, under which Mr. Isaac Kaufmann agreed to contribute to the Emma Farm Association the sum of \$50,000 for a new Emma Farm, under certain conditions. Among these were that the Association should buy the recommended site located in Jackson Township, Butler County, Pennsylvania, and to develop same substantially within the scope and lines of the general plans prepared by Morris Knowles Company, Inc. Mr. Kaufmann stipulated

1920:

(41)

that no part of the \$50,000 was to be used for the furnishment or equipment of the buildings to be erected. It was further agreed that the name of the Association should at no time be changed and that consideration should be given in the operation of the Camp to the entertainment of mothers and small children. The Federation approved the acceptance of the gift by the Emma Farm Association and agreed to furnish, for the maintenance of the premises and the operation of the activities of the new Camp, an equitable and fair share of the funds available for the maintenance of all the beneficiaries of the Federation.

Following the execution of the above agreement steps were taken to purchase the property in question. In addition to the proposed site the use of certain land was required to erect a necessary bridge. The Borough of Harmony gave the Association the right to use, free, additional necessary property, and following this action the purchase of the property was consummated just before the close of 1920. The above work of the Association was done by the Plan and Scope Committee and the Executive Committee. The Resident Director of the Irene Kaufmann Settlement served again as Managing Director, and in addition to the duties of that position, directed and supervised all the clerical and office work in connection with the duties of Secretary and Treasurer of the Emma Farm Association. The By-Laws were revised and the year closed with a call for an Annual Meeting in January, at which time an entire new Board was to be selected.

The year 1920 marks the end of the work accomplished by the Association at Harmarville. This work, when started (1908) was among the first of its kind in Pittsburgh and vicinity, and our Camp when erected, was rightly considered one of the best. Its work during these past eleven years has been recognized and praised by all groups, and was the incentive to similar projects being undertaken. It is recalled, for example, that the Emma Farm Association housed, among others, children from the Woods Run Settlement and the Soho Community House. These institutions, seeing the benefits derived from the Emma Farm, now have Camps of their own.

The place was visited not only by Pittsburghers, but the people from various parts of the Country, who came to us for ideas and suggestions, in order to start similar work elsewhere. On the other hand, 1920 marks the beginning of a new epoch—one of enlarged service. It is expected that 1921 will see the consummation of a new Emma Farm, equal to, if not superior to any other similar Camp project in

E. F.  
1923-  
1924

E. F.  
1926

E. F.  
1927

E. F.  
1928

E. F.  
1929

F.

3  
2

E. F.  
1912

E. F.  
1913

E. F.

E. F.  
1915

E. F.  
1916

E. F.  
1917

E. F.

E. F.

E. F.  
1920

(42)

1920,

the United States. While no children and mothers have been served this past year by the Association, what has been accomplished means the possibility of serving larger groups and helping them in a better way.

All of you who have shared in the achievements of the Emma Farm Association since its incorporation, either through financial contribution or voluntary service rendered, are to be congratulated on what has been accomplished. The Association hopes to have your continued interest and support, in order to make the work of the future even greater than that of the past.

SIDNEY A. TELLER,  
Managing Director.

Directors  
MAYNARD COHEN  
Secretary  
JACOB FRIEDMAN  
Treasurer  
T. S. OSGOOD  
Second Vice President  
JOSEPH KORNBLUM  
First Vice President  
MORDECAI B. WATKINS  
President  
MORDECAI B. WATKINS  
President  
SIDNEY A. TELLER  
Managing Director  
JACOB FRIEDMAN  
Treasurer  
T. S. OSGOOD  
Second Vice President  
JOSEPH KORNBLUM  
First Vice President  
MORDECAI B. WATKINS  
President

(43)

E. F.  
1923-  
1924

E. F.  
1926

E. F.  
1927

E. F.  
1928

E. F.  
1929

30

E. F.  
1920

32

# Federation Report Emma Farm

1921

E.F.  
1912

(7) (47)

E.F.  
1913

E.F.

E.F.  
1915

E.F.  
1916

E.F.  
1917

E.F.

E.F.

E.F.  
1920

E.F.  
1921

the  
view  
of  
the  
sh  
hor  
o

1921

(45)

E.F.  
1923-  
1924

E.F.  
1926

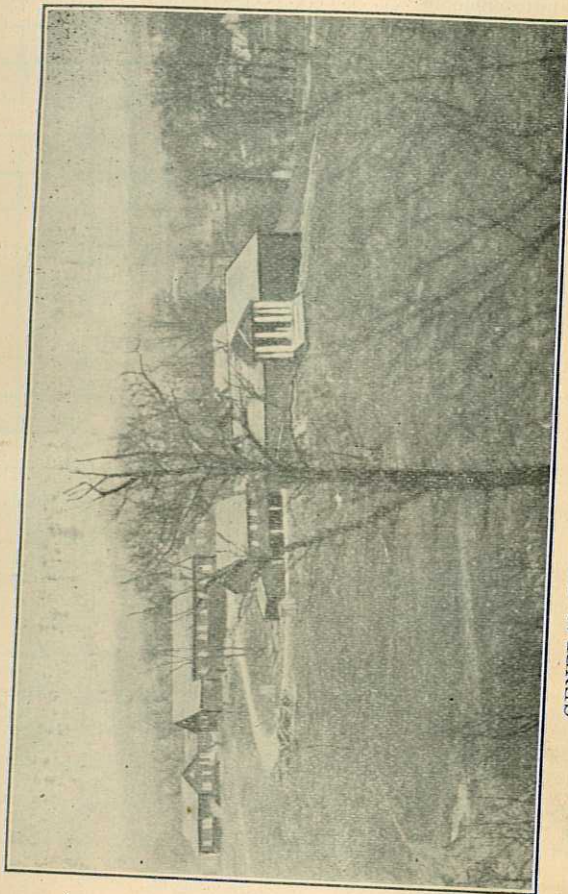
E.F.  
1927

E.F.  
1928

E.F.  
1929  
30

32

E.F.  
1922



GENERAL VIEW, NEW EMMA FARM CAMP

E.F.  
1912

E.F.  
1913

E.F.

E.F.  
1915

E.F.  
1916

E.F.  
1918

E.F.

E.F.  
1920

E.F.  
1921

(46)

**EMMA FARM ASSOCIATION**

**Harmony, Pa.**

SIDNEY A. TELLER, Managing Director

**OFFICERS**

**President**

A. L. RAUH

**Vice President**

SAMUEL MUNDHEIM.

**Treasurer**

A. M. HAST

**Secretary**

W. M. SIGAL

**Board of Directors**

Terms expire January, 1923

Dr. Verner Callomon	Miss N. Oppenheimer
Mrs. Leon Falk	Isadore Rothstein
Edwin C. May	Ferdinand T. Weil
	Nathan B. Jacobs

Terms expire January, 1924

Louis J. Affelder	Edward M. Meyer
William K. Frank	Miss Ella Wertheimer
	Edgar J. Kaufmann

Terms expire January, 1925

Leon Falk	Dr. Samuel H. Goldenson
Lee B. Foster	A. J. Sunstein
	Isaac W. Frank

**Honorary Members**

Mrs. Isaac Kaufmann	Mrs. Morris Kaufmann
	Mrs. Edgar J. Kaufmann
	Dr. Ludwig B. Bernstein, Ex-officio

1921

(47)

E.F.  
1923-  
1924

E.F.  
1926

E.F.  
1927

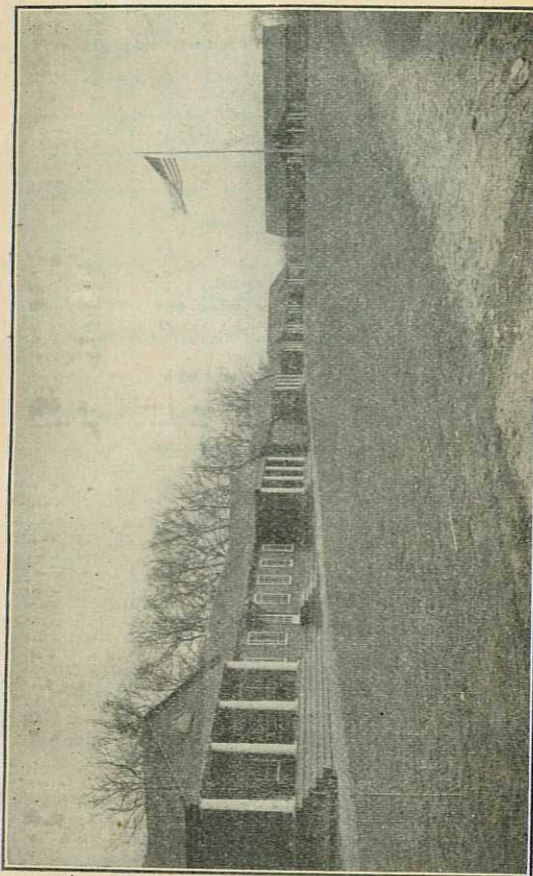
E.F.  
1928

E.F.  
1929

30

32

E.F.  
1922



E.F.  
1912

E.F.  
1913

E.F.

E.F.  
1915

E.F.  
1916

E.F.  
1918

E.F.

E.F.

E.F.  
1920

E.F.  
1921

(48)

1921

### EMMA FARM ASSOCIATION

#### Financial Report

##### Federation Account:

No Balance January 1, 1921.....\$ \_\_\_\_\_

##### RECEIPTS

Administration and Office Salaries.....	5.00
Federation .....	2,000.00
	<u>\$ 2,005.00</u>

##### DISBURSEMENTS

Administration and Office Salaries.....	\$ 1,415.00
Camp Salaries .....	545.00
Insurance, Heat, Light and Power.....	45.00
	<u>\$ 2,005.00</u>
January 1, 1922.....	No Balance

##### Building and Improvement Account from Oct. 1, 1920 to Dec. 31, 1921—In Connection with the New Emma Farm Camp

##### RECEIPTS

Sale of Old Emma Farm.....	\$15,000.00
Refund—P. T. T. Co.....	136.75
Interest on Fund, Mar. 21, 1921.....	284.77
Interest on Fund, Aug. 1, 1921.....	186.55
Isaac Kaufmann Gift.....	50,000.00
Mrs. Morris Kaufmann Gift.....	2,500.00
	<u>\$68,108.07</u>

##### DISBURSEMENTS

Lease Beam Heir Property.....	\$ 1.00
Option on Beam Heir Property.....	300.00
Purchase of Beam Heir Property and expenses of P. T. T. Co.....	9,000.00
Harmony Ordinance .....	30.50
Morris Knowles Co.....	3,500.00
To Kaufmann's Dept. Store.....	49,877.03
To Kaufmann's Dept. Store.....	2,500.00
	<u>\$65,208.53</u>

Balance January 1, 1922.....\$ 2,899.54

1921

(49)

E.F.  
1923-  
1924

E.F.

1926

E.F.

1927

E.F.

1928

E.F.

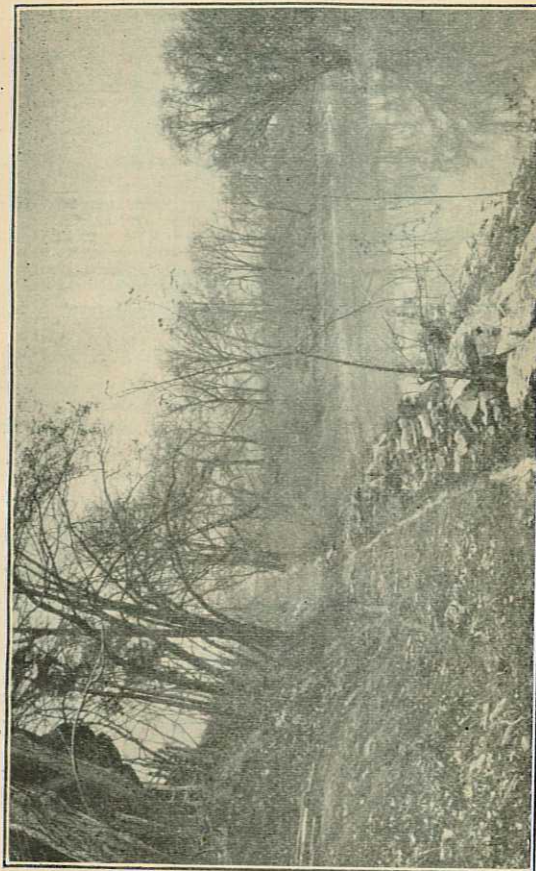
1929

30

31

32

E.F.  
1922



RIVER ROAD AND CONNOQUENESSING CREEK, NEW EMMA FARM CAMP

E.F.  
1912

E.F.  
1913

E.F.

E.F.  
1915

E.F.  
1916

E.F.  
1917

E.F.

E.F.

E.F.  
1920

E.F.  
1921

(30)

1921

### EMMA FARM ASSOCIATION

#### Extracts from the Managing Director's Report

The year 1921 has been spent in planning and building the new Emma Farm Camp which is located at Harmony, Pa. Harmony is on the Harmony Inter-urban Car Line and also on the Baltimore and Ohio Railroad. It is hoped that you will take the first opportunity to visit this Camp, which is not only the outstanding Community development for many years, but also because the Emma Farm Association has now probably one of the finest camps for mothers and children in the United States. It is expected to formally dedicate the Camp June 25th, after which time the first group of children will make use of the place.

As soon as the ground was purchased, plans were completed for the Camp, and building operations started. To save money and to come within the funds at the disposal of the Association, we became our own contractors where possible. To make the camp property accessible, a hundred-foot steel bridge was built across the Connoquenessing Creek which bounds our property on two sides for about three thousand feet. A public impounding water reservation bounds the property on the third side, thus giving beauty and privacy, and making a peninsula of the camp site. The site has been praised as ideal for the purpose of a Camp and the Building Committee has made every effort to make an ideal camp as well.

Not visible to the eye, but taking a great deal of planning and meaning much in the value of such a camp, are the sewage, water, gas and electric lines. The camp has been made sanitary and complete. Water for drinking and bathing purposes comes from the pure supply of the city of Harmony. The sewage disposal plant has been approved by the State Department of Health.

Emma Farm Camp is built to accommodate a total camp population of about 200. To house the children and mothers, there are eight dormitories or cottages of pretty colonial design, each complete as to wash room and toilet facilities. A camp counselor's room is provided in each cottage. A central dining hall capable of seating the entire camp population at one time has been built. The kitchen is provided with the latest equipment, and a semi-cafeteria service insures that the children will get their food "steaming hot." To meet emergencies of illness, a

1921

(31)

E.F.  
1923-  
1924

### EMMA FARM ASSOCIATION

#### Extracts from the Managing Director's Report

The year 1921 has been spent in planning and building the new Emma Farm Camp which is located at Harmony, Pa. Harmony is on the Harmony Inter-urban Car Line and also on the Baltimore and Ohio Railroad. It is hoped that you will take the first opportunity to visit this Camp, which is not only the outstanding Community development for many years, but also because the Emma Farm Association has now probably one of the finest camps for mothers and children in the United States. It is expected to formally dedicate the Camp June 25th, after which time the first group of children will make use of the place.

As soon as the ground was purchased, plans were completed for the Camp, and building operations started. To save money and to come within the funds at the disposal of the Association, we became our own contractors where possible. To make the camp property accessible, a hundred-foot steel bridge was built across the Connoquenessing Creek which bounds our property on two sides for about three thousand feet. A public impounding water reservation bounds the property on the third side, thus giving beauty and privacy, and making a peninsula of the camp site. The site has been praised as ideal for the purpose of a Camp and the Building Committee has made every effort to make an ideal camp as well.

Not visible to the eye, but taking a great deal of planning and meaning much in the value of such a camp, are the sewage, water, gas and electric lines. The camp has been made sanitary and complete. Water for drinking and bathing purposes comes from the pure supply of the city of Harmony. The sewage disposal plant has been approved by the State Department of Health.

Emma Farm Camp is built to accommodate a total camp population of about 200. To house the children and mothers, there are eight dormitories or cottages of pretty colonial design, each complete as to wash room and toilet facilities. A camp counselor's room is provided in each cottage. A central dining hall capable of seating the entire camp population at one time has been built. The kitchen is provided with the latest equipment, and a semi-cafeteria service insures that the children will get their food "steaming hot." To meet emergencies of illness, a

E.F.

1926

E.F.

1927

E.F.

1928

E.F.

1929

30

32

E.F.  
1922

E. F.  
1912

E. F.  
1913

E. F.

E. F.  
1915

E. F.  
1916

E. F.  
1917

E. F.

E. F.

E. F.  
1920

E. F.  
1921

(52)

1921

small hospital building has been erected which will also house the dispensary, and the diet kitchen where the babies' milk is prepared by the nurse. There is an administration building to house the camp superintendent and to provide a gathering place for visitors and camp counselors. To meet the need of recreation on rainy days, a large open air building has been provided. This building is equipped with a stage and a moving picture machine. Washrooms and toilets are located in the building. This building can comfortably house the children all day and all evening, if necessary, except for meals. In addition to another small building used for recreation upstairs and a laundry downstairs, there is a pretty brick cottage where caretaker and servants are housed. To take care of the bathing at the camp, a swimming pool 25 feet wide and 75 feet long has been built, but in addition to this there is a bathhouse equipped with shower and tub baths with running hot and cold water. Recreation outdoors is provided by boating on the river, a wading pool, a complete children's playground, baseball field, tennis courts, etc. all on the property, and numerous beautiful walks and hikes nearby. The planting plan calls for beautification of the grounds with trees, shrubbery, vines and plants, and before the summer is over the new Emma Farm will have been made "a place of beauty and a joy forever."

This gift to the Community has been made possible by the generosity of the late Mr. Isaac Kaufmann. Mrs. Isaac Kaufmann, the late Mr. Morris Kaufmann, Mrs. Morris Kaufmann and Mr. and Mrs. Edgar Kaufmann.

The Building Committee is composed of A. J. Stein, Chairman; Sidney A. Teller, Secretary; Edg. J. Kaufmann, Ex-Officio; W. Y. Cochen, Consulting; Louis J. Affelder, Isaac W. Frank, Dan Hamme, Schmidt, Samuel Mundheim, Eugene Strassburger.

The Building Committee expects to complete its work and render its report in full at the time of dedication, at which exercises the Donors will formally present the Camp to the Emma Farm Association.

To make the Camp a success outside of its physical equipment and financial support, it is necessary to have the interest and devotion of the Community especially in supplying the necessary volunteer camp counselors or leaders for the groups of boys and girls who will go. The first group goes about June first for a period of 12 days, followed each second Monday by another group. In all 40 young women and 30 young men, each going for one trip are needed. You are earnestly requested to send to the under-

1921

(53)

E. F.  
1923-  
1924

E. F.  
1926

E. F.  
1927

E. F.  
1928

E. F.  
1929

30

32

E. F.  
1922

signed at once, suggestions of persons who can or will serve as camp counselors.

The first year of a camp is its most important year. It is the hardest year for staff and counselors. The work at the old Emma Farm Camp received praise and recognition to which it was entitled. You can share in making the new camp the success it will be, in helping in one or more ways. The funds for the maintenance of Emma Farm come from the Federation of which you are a member. More Federation support means a needed extension of the work at Emma Farm. Interest yourself in the Camp. Visit it. Get one person who will serve as a Counselor. The pictures presented here do not do justice to the grounds or buildings. One of the finest camps of its kind awaits your inspection and visit. Won't you consider this an invitation for the Dedication Exercises and won't you plan to come as soon as notice of the definite date is sent to you?

SIDNEY A. TELLER,  
Managing Director.

NOTE

It is planned to issue a special booklet covering the history of the Emma Farm Association and to include photographs of the old and new camps. If you desire a copy of this booklet, please mail in your request at once as the edition will be limited.

E.F.  
1912

E.F.  
1913

E.F.

E.F.  
1915

E.F.  
1916

E.F.  
1917

E.F.

E.F.

E.F.  
1920

E.F.  
1921

(54)

(55)

E.F.  
1923-  
1924

Education Report  
Emma Farm

1922

E.F.  
1926

E.F.  
1927

E.F.  
1928

E.F.  
1929

30

32

E.F.  
1922



E.F.  
1912

E.F.  
1913

E.F.

E.F.  
1915

E.F.  
1916

E.F.  
1917

E.F.

E.F.

E.F.  
1920

E.F.  
1922

(56)

*Ludwig Bernstein*

*Samuel Mundheim*

1921

1922

(57)

E.F.  
1923-  
1924

E.F.  
1926

E.F.  
1927

E.F.  
1928

E.F.  
1929

30

32

**EMMA FARM ASSOCIATION**  
Located between Harmony and Zellenople, Pa.  
SIDNEY A. TELLER, Managing Director

**OFFICERS**

President

A. L. RAUH

Vice President

SAMUEL MUNDHEIM

Treasurer

A. M. HAST

Secretary

W. M. SIGAL

**Board of Directors**

**Terms Expire January, 1924**

Samuel Mundheim	William K. Frank
W. M. Sigal	Nathan B. Jacobs
Louis J. Affelder	Miss Ella Wertheimer
Edgar J. Kaufmann	

**Terms Expire January, 1925**

A. L. Rauh	Lee B. Foster
A. M. Hast	Dr. Samuel H. Goldenson
Leon Falk	A. J. Sunstein
Isaac W. Frank	

**Terms Expire January, 1926**

Dr. Verner Callomon	Miss N. Oppenheimer
Mrs. Leon Falk	Isadore Rothstein
Dr. Joseph M. Jackson	Ferdinand T. Weil
Edward M. Meyer	

**Honorary Members**

Mrs. Isaac Kaufmann  
Mrs. Edgar J. Kaufmann  
Mrs. Morris Kaufmann  
Dr. Ludwig B. Bernstein, Ex-officio

E.F.  
1912

E.F.  
1913

E.F.

E.F.  
1915

E.F.  
1916

E.F.  
1917

E.F.

E.F.

E.F.  
1920

E.F.  
1922

(58)

1922

EMMA FARM ASSOCIATION

Financial Report

RECEIPTS

Camp .....	\$ 193.95
Transportation (and other monies received)	4,151.87
Food (refund) .....	18.71
Insurance (refund) .....	5.50
Laundry (refund) .....	1.60
Administration .....	105.51
Improvements, Maintenance and Repairs..	63.98
Donations .....	191.30
*Federation of Jewish Philanthropies.....	16,000.00
Interest on Bank Balances .....	47.12
Total Receipts .....	\$20,779.54

\*Included in this is \$2,000.00 appropriated during 1922 received after January 1, 1923, but credited as being received December 31, 1922. The monies were used to repay loans as of 1922.

DISBURSEMENTS

Camp .....	\$ 2,493.59
Transportation .....	1,783.74
Food .....	6,463.64
Insurance .....	1,703.35
Gas, Electricity and Water.....	222.00
Laundry .....	709.96
Administration .....	2,182.34
Wages .....	2,156.99
Salaries .....	2,440.00
Improvements, Maintenance and Repairs..	623.93
Total Disbursements .....	\$20,779.54
January 1, 1923 .....	No balance

(Bills unpaid January 1, 1923 total \$2,000.00)

A. M. HAST, Treasurer.

1922

(59)

E.F.  
1923-  
1924

EMMA FARM ASSOCIATION

Extracts from the Managing Director's Report  
1908—For the Fourteenth Year—1922

In May 1908 the Emma Farm Association; "the purpose being to maintain a Camp in order to provide open air recreation for children and adults and a temporary home for convalescents" was brought into existence through the generosity of the late Isaac Kaufmann and the late Morris Kaufmann. A Camp—one of the first of its kind in this district and a model at the time it was dedicated, was located near Harmarville, Pa., and the work carried on at this location until the close of the season 1919.

The work at Harmarville was made possible through Isaac Kaufmann and Morris Kaufmann and members of their families, who not only gave generously for various buildings, improvements and equipment, but also assisted in the maintenance and operation of the Camp. In 1912 the Emma Farm Association joined the Federation of Jewish Philanthropies of Pittsburgh and from that time secured funds from the Federation.

In 1919 it was decided that the work of the Emma Farm Association had outgrown the accommodations at Harmarville and it was inadvisable to continue longer at that location. The years of 1920 and 1921 were spent in locating an ideal site on the Connoquenessing Creek opposite to the towns of Harmony and Zelienople, Pa., which site was purchased through funds available (\$15,000) from the sale of the property at Harmarville. Plans were drawn and the building started. The total of about \$110,000 was spent on the new Emma Farm Camp at Harmony, Pa. This covered land, bridge, buildings, equipment and furnishings complete as it stood Dedication Day, June 25, 1923, when Mr. Isidore Rothstein presented this wonderful gift to the Community through the Emma Farm Association in the following words:

"Permit me now, in the sublime memories of Isaac Kaufmann and Morris Kaufmann, and in behalf of the members of the families of these sainted men to present this Emma Farm Camp to the Emma Farm Association."

The Building Committee with A. J. Sunstein as Chairman and Louis J. Affelder, W. Y. Cochen, Isaac W. Frank, Dan Hammerschmidt, Edgar J. Kaufmann, Samuel Mundheim, Eugene Strassburger

E.F.

1926

E.F.

1927

E.F.

1928

E.F.

1929

30

32

E.F.  
1912

E.F.  
1913

E.F.

E.F.  
1915

E.F.  
1916

E.F.  
1917

E.F.

E.F.

E.F.  
1920

E.F.  
1922

(60)

1922

and Sidney A. Teller as members, overcame many difficulties and set new standards and ideals in the physical side of a Camp. Sanitation made the best, fire hazards reduced, the care, comfort and convenience of the children and mothers considered first, and the ease of operation which meant efficiency being put into the plans at every step. The Equipment and Furnishings Committee with Mrs. Isaac Kaufmann as Chairman, assisted by Mrs. Edgar J. Kaufmann, Mrs. Morris Kaufmann, Samuel Mundheim, Sidney A. Teller and Mrs. Sidney A. Teller, took care of a thousand details in such a manner as to make the Camp the day it was dedicated, complete, ready for use. In the building of the Camp, as well as in its furnishings and equipment, the Donors only desired what was best for the purpose. June 25, 1923 Emma Farm Camp was dedicated and presented to the Community. It is estimated that three thousand persons visited the grounds during that day. For the thousands who have been benefited since the work started in 1908, a boy and a girl, now grown to young manhood and womanhood, spoke on the program, telling us what the Camp had meant to them. In their name and as their gift, they presented the flag of the Camp, which was raised by the children under impressive ceremonies.

It is impossible in this brief report to go into the many matters of interest concerning the Camp, its grounds, buildings, equipment, furnishings and operation. The best way to know Emma Farm Camp, is to visit it this summer. You are not only invited, but you are expected. We need and want your interest. We ask your co-operation in securing needed counselors. The Camp should be operated for at least six groups. Its development into an all year round convalescent or health home is desired. The Federation, which has assumed the cost of maintenance of the Camp, needs more monies to carry out the larger program. If you and your friends visit the Camp, this support will be forthcoming.

The City end of the Emma Farm Camp was assumed by the Irene Kaufmann Settlement, and to that Institution and its staff workers, we here record our appreciation and thanks. Through the Irene Kaufmann Settlement, the new Camp was advertised, all camp questions answered, the children and mothers selected, the moneys collected, medical examinations of the children arranged, baggage taken care of, transportation to Camp and back again handled, and Camp Counselors secured. The Settlement also gave leave of absence to some of its workers needed to operate the Camp.

✓ We pursued the usual policy of giving first consideration to those most in need of an outing in the

1922

(61)

E.F.  
1923-  
1924

country, and least able to pay. The recommendations of the United Hebrew Relief Association, the socialworkers, nurses, doctors and school teachers were the "preference list." After these were taken, the self respecting poor who could pay part or all of the nominal fee asked to cover transportation, etc., were sent. There are many in the "Ghetto" who are in need of an outing, who cannot afford to go to the sea shore. The opportunity was given as far as our capacity allowed.

The Camp was opened Monday, June 26 and closed Friday, September 1, five groups were sent, each for eleven full days. A total of 1,064 individuals went, not counting the 80 counselors. A total of 41,361 meals were served. This included over 12,000 quarts of wholesome pasteurized milk, an average of almost a quart of milk per child per day. The children who were weighed gained a total of over 2,500 pounds, or about an average of 2½ pounds each. These statistics are effective measurements of the great volume of work done this past summer. While in operation, the Emma Farm Camp is the largest institution associated with the Federation. The burden of operation fell on Julia Pines Teller, who acted as Camp Superintendent. To her and her associates at the Camp is due the praise for the success of the summer's work. A new camp in a new community to be personelled and operated, took unceasing energy and thought. Sufficient to say from every standpoint the work of the Camp was up to the highest standard and the summer's work went through with the few criticisms and many compliments.

To give you an insight into the work of the Camp, a typical day's program is presented. We will take Tuesday, July 11th, during a girls' trip. At 6:30 A. M. the rising bell awakes the Camp and by 6:45 A. M. everybody is out on "Flag Staff Hill" for setting up exercises. These are given by the Recreation Leader and all must take part. At the close, as the entire Camp stands at attention, a "color guard" raises the Flag and the assembly salutes and gives the pledge of allegiance. At 7:15 the breakfast bell rings. 208 hungry children and 16 hungry counselors are seated at one time in the first "Cafeteria" dining hall of any Camp of its kind. The last child's food is as hot and appetizing as that of the first child served. Stewed apricots, puffed rice, bread and apple butter and milk, as much as they want, forms the meal. At the close of each meal, each plate is inspected by the Resident Nurse, not only to prevent waste of food, but to keep a check on the child's health. A star is given to that table where all have eaten their meal without waste. A group of children stay behind to clear the tables of 2,000 dishes, all aluminum ware, which are washed

E.F.

1926

E.F.

1927

E.F.

1928

E.F.

1929

30

F  
32

E.F.  
1912

E.F.  
1913

E.F.

E.F.  
1915

E.F.  
1916

E.F.  
1917

E.F.

E.F.

E.F.  
1920

E.F.  
1922

(62)

1922

and sterilized in the electric dish washing machine. The children are busy for the next half hour making their beds and tidying their dormitories. Before dismissal, every bed and dormitory is inspected and made to meet the standard of cleanliness and order of Emma Farm Camp.

One hour each day is given by everybody to keep the Camp as a whole in order. Papers, rubbish, twigs are picked up, weeds pulled, roads and paths made neat, etc. By 9:30 "work" is finished and "play" starts. There is a Counselor for every thirteen children. Off they go with a cottage or camp song for a hike, to the playgrounds to play baseball, basketball, volley ball or to row on the beautiful Connequenessing Creek, etc. This recreation activity is extended until noon, unless it is warm enough to swim at 11 o'clock.

The big meal of the day is served at noon. Today the menu calls for salmon salad, a whole tomato, sweet corn, bread and peanut butter and milk. After dinner those who want to see the nurse about anything from sunburn to "stomach ache" go to the wonderful "Rest Cottage" fully equipped with dispensary, diet kitchen, patients' isolation room, etc. If any child is sick, no matter what the apparent reason, the child is immediately isolated and genial Dr. Arthur J. Stewart, of Harmony is called. His decision is final as to whether a child stays at Camp or goes home. Six were sent home to protect the health of the Camp, which is of first consideration. Sixty-three patients were seen by the Doctor during his 27 visits to Camp, and 3 at his office. Until 2 P. M. quiet reigns in Camp, as a compulsory rest period fills the hour. The children must take off shoes, lie down in the dormitories and sleep, at least rest until 2 o'clock. Then comes an hour when "lolly pops" are given out, the mail is distributed, letters written, books read, quiet games played, handwork done, etc. At 3 o'clock is the swimming bell. All must take a soap shower bath in the bath house, then to the wading pool or the swimming pool or to the sand pile or playground. Sports and games and recreation make the time fly fast and 5:15 as a signal to clean up for supper comes soon. Hungry again at supper time, so strength is built up with fried potatoes, corn bread and syrup, bread and butter, strawberry jam and milk. After supper, depending on the weather, is camp fire and songs, or a marshmallow roast; or the big "Play House" is opened for stunts, impromptu vaudeville, songs, music, moving pictures, etc. Usually at 8 o'clock the Bed Bell rings. A glass of milk is served, also crackers for those who wish it. By 9 o'clock 208 tired but happy children are fast asleep, healthier than they were that morning when they got up.

1922

(63)

E.F.  
1923-  
1924

E.F.  
1926

E.F.  
1927

E.F.  
1928

E.F.  
1929

30

32

And so Emma Farm Camp has gone on every day during the summer, reducing disease and delinquency, making for "health, wealth, and happiness"—good and better citizenship. Those who benefit through the constructive and preventive work of the Emma Farm Association, make a living monument which brings joy and honor to those who gave the gift of a new Emma Farm Camp, as well as to you, who through your contribution or your service, make it possible to give the great gifts of health and happiness to many tiny babes and tired mothers and to hundreds of growing boys and girls.

SIDNEY A. TELLER,  
Managing Director.

E.F.  
1912

E.F.  
1913

E.F.

E.F.  
1915

E.F.  
1916

E.F.  
1917

E.F.

E.F.

E.F.  
1920

E.F.  
1922

(67)

1923-24

(69)

E.F.  
1923-  
1924

E.F.  
1926

E.F.  
1927

E.F.  
1928

E.F.

1929

30

32

**EMMA FARM ASSOCIATION**  
Camp Located Between Harmony and  
Zelienople, Pa.  
SIDNEY A. TELLER, Managing Director

**OFFICERS**

**President**

EDGAR J. KAUFMANN

**Vice President**

ISIDORE ROTHSTEIN

**Treasurer**

A. M. HAST

**Secretary**

LEE B. FOSTER

**Board of Trustees**

**Terms Expire January, 1926**

Dr. J. H. Barach	Isidore Rothstein
Dr. Verner Callomon	Ferdinand T. Well
Mrs. Leon Falk	A. L. Wolk
	Miss Nannie Oppenheimer

**Terms Expire January, 1927**

Louis J. Affelder	Nathan B. Jacobs
Miss Lisa Blum	Edgar J. Kaufmann
Wm. K. Frank	Edwin C. May
	Miss Ella Wertheimer

**Terms Expire January, 1928**

Leon Falk	A. M. Hast
Lee B. Foster	Edwin C. Rauh
I. W. Frank	Maurice W. Spear
	A. J. Sunstein

**Honorary Members**

Mrs. Edgar J. Kaufmann  
Mrs. Isaac Kaufmann  
Mrs. Morris Kaufmann  
Dr. Ludwig B. Bernstein, Ex-Officio

E.F.  
1912

E.F.  
1923-  
1924

(76)

1923-24

**EMMA FARM ASSOCIATION**

**Financial Report for the Year 1923**

**Federation Account**

**RECEIPTS**

Camp (refund)	\$ 50.75
Transportation (including refund)	4,355.25
Food (refund)	38.56
Administration (refund)	149.94
Donations	170.00
*Federation	18,000.00
Interest on Bank Balances	107.73
Endowment Fund Interest	1.94

Total Receipts ..... \$22,874.17  
 \*Included in this is \$1,000.00 appropriated during 1923 received after January 1, 1924, but credited as being received December 31, 1923. This money was used to repay, in part, loans as of 1923.

**DISBURSEMENTS**

Camp	\$ 2,669.61
Transportation	1,472.86
Food	7,405.02
Insurance	2,039.49
Gas, Electricity and Water	292.74
Laundry	893.48
Administration	1,679.87
Wages	3,040.05
Salaries	2,582.50
Maintenance	1,021.04

Total Disbursements ..... \$23,096.66  
 Deficit, December 31, 1923, Federation Account ..... \$ 222.49

**Landscape Account**

**RECEIPTS**

From Mrs. Edgar J. Kaufman, during year \$2,000.00

**DISBURSEMENTS**

Disbursed ..... \$2,000.00

No balance, December 1, 3 1923, Landscape Account.

E.F.  
1922

1923-24

(77)

**Counselors' Cottage Account**

**RECEIPTS**

From Mrs. Isaac Kaufmann, during year 1923 ..... \$1,000.00

**DISBURSEMENTS**

Disbursed ..... \$1,000.00  
 No balance, December 13, 1923, Landscape Account.

**Lincoln Log Cabin Account**

**RECEIPTS**

From I. W. Frank, May, 1923	\$ 500.00
From A. L. Rauh, July, 1923	100.00
From Edgar J. Kaufmann, August, 1923	500.00
From A. J. Sunstein, September, 1923	100.00
From the Pittsburgh Wholesale Lumber Dealers' Association	450.00

Total Receipts ..... \$1,650.00

**DISBURSEMENTS**

Disbursed ..... \$2,565.73  
 Deficit, December 31, 1923, Lincoln Log Cabin Account ..... \$ 915.73

**Endowment Fund**

**RECEIPTS**

From Marks Browarsky Estate	\$100.00
From Mrs. A. M. Hast, in memory of her mother, Mrs. Bertha Benswanger	100.00
From Mrs. Isidore Rothstein, in memory of her parents, Mr. and Mrs. Jonas Meyer	100.00
From Mr. Isidore Rothstein, in memory of his parents, Mr. and Mrs. George Rothstein	100.00

Total ..... \$400.00

**Summary, December 31, 1923**

Deficit, Federation Account ..... \$222.49  
 Deficit, Lincoln Log Cabin Account ..... 915.73  
 \$1,138.22

Balance, Loan Account (still due A. L. Rauh) ..... 1,000.00

Actual Deficit, December 31, 1923 ..... \$ 138.22

A. M. HAST, Treasurer.

E.F.  
1926

E.F.  
1927

E.F.  
1928

E.F.  
1929

F  
1932

E.F.  
1912

E.F.  
1923-  
1924

(72)

1923-24

EMMA FARM ASSOCIATION

Treasurer's Report Covering the Building, Improve-  
ment, Furnishing, and Equipment of the  
New Emma Farm Camp  
(Completed)

RECEIPTS

From Donors:	
Isaac Kaufmann Gift .....	\$ 50,000.00
Mrs. Isaac Kaufmann .....	15,563.16
Mr. and Mrs. Edgar Kaufmann .....	17,762.17
Mrs. Morris Kaufmann .....	15,154.29
Henry Kaufmann .....	5,000.00
From sale of Old Emma Farm, refunds, etc. ....	15,732.80
Total Receipts .....	\$119,212.42

DISBURSEMENTS

Land .....	\$ 9,301.00
Bridge .....	11,704.31
Land Improvement .....	20,727.19
Buildings .....	64,631.44
Furnishings and Equipment .....	12,848.48
Total Disbursements .....	\$119,212.42

A. M. HAST, Treasurer.

E.F.  
1913

E.F.

E.F.  
1915

E.F.  
1916

E.F.  
1917

E.F.

E.F.

E.F.  
1920

E.F.  
1922

1923-24

(73)

EMMA FARM ASSOCIATION

RESOLUTION

Unanimously adopted by the Emma Farm Association  
at the Annual Meeting held Sunday,  
January 20th, 1924

WHEREAS, the Emma Farm Association has a  
most complete and beautiful summer camp which  
has given, is giving, and will continue to give health,  
happiness, and wholesome recreation to thousands of  
children and mothers of our Community, and  
whereas,

This gift was made possible through the vision  
and generosity of Isaac Kaufmann and of Morris  
Kaufmann, while they lived, and the interest and  
support of Mrs. Isaac Kaufmann, Mrs. Morris Kauf-  
mann, Mr. and Mrs. Edgar J. Kaufmann, and Mr.  
Henry Kaufmann, and whereas,

The Community, the Federation of Jewish Philan-  
thropies of Pittsburgh, the Emma Farm Association  
and its beneficiaries, owe a debt of appreciation and  
gratitude to the donors individually and collectively;

NOW THEREFORE BE IT RESOLVED:

That the Board of Trustees of the Emma Farm  
Association express for the Association and its Bene-  
ficiaries, for the Federation and for the Community,  
their most grateful appreciation and thanks to the  
donors for their gifts, and further, express their  
heartfelt wish that the generous donors may live  
for many years to see the beautiful fruits of their  
unstinted benefactions; and be it further resolved,

That these resolutions be spread upon the records  
of the Emma Farm Association, and that a copy be  
transmitted to each of the surviving Donors and to  
the Press of Pittsburgh.

E.F.  
1926

E.F.  
1927

E.F.  
1928

E.F.  
1929

30

E.F.  
1932

E.F. 1912  
E.F. 1923-1924

E.F. 1913

E.F.

E.F. 1915

E.F. 1916

E.F. 1917

E.F.

E.F.

E.F. 1920

E.F. 1922

(74) 1923 - 1924

EMMA FARM ASSOCIATION

Financial Report for the Year 1924

Federation or General Account

RECEIPTS

Camp .....	\$ 58.34
Transportation .....	4,700.93
Food (refund) .....	3.50
Administration .....	220.66
Donations:	
Lee B. Foster .....	\$ 25.00
Boys' Club Federation .....	\$ 25.00
Mrs. Edward Meyers—for scale ..	200.00
Mrs. Isaac Kaufmann—for painting .....	1,000.00
Federation of Jewish Philanthropies .....	\$ 1,240.00
Interest on Bank Balances .....	18,000.00
	53.08
Total Receipts, Federation or General Account .....	\$24,276.51

DISBURSEMENTS

Deficit, January 1, 1924 .....	\$ 222.49
Camp .....	785.16
Transportation .....	1,447.70
Food .....	7,231.71
Insurance .....	158.08
Gas, Electric and Water .....	781.87
Laundry .....	927.82
Administration .....	1,680.93
Wages .....	3,397.65
Salaries .....	2,888.86
Maintenance .....	4,814.75

Deficit, December 31, 1924, Federation Account .....

Loan Account

RECEIPTS

Balance, loans advanced by A. L. Rauh in 1923 .....	\$1,000.00
Loan advanced by E. J. Kaufmann, May, 1924 .....	1,000.00
Loan advanced by E. J. Kaufmann, June 1924 .....	500.00
Total .....	\$2,500.00

24,287.02

(75)

1923 - 24

DISBURSEMENTS

Loans repaid to A. L. Rauh, January, 1924 ..	\$1,000.00
Loans repaid to E. J. Kaufmann, September, 1924 .....	1,500.00
No Balance, December 31, 1924, Loan Account ..	\$2,500.00

Lincoln Log Cabin Account

RECEIPTS

From Wm. K. Frank .....	\$ 100.00
From W. B. Klee .....	100.00
From Max Rothschild .....	100.00
From Maurice Falk .....	100.00
From Marcus Aaron .....	100.00
From Lee B. Foster .....	100.00
From Irvin F. Lehman .....	100.00
From Sidney A. Teller and Julia P. Teller ..	100.00
From Nathaniel Spear .....	100.00
From Charles Dreifus .....	100.00
From Leon Falk .....	100.00
Total Receipts .....	\$1,100.00

DISBURSEMENTS

Deficit, January 1, 1924 .....	\$ 915.73
Disbursed .....	184.27
Total Disbursements .....	\$1,100.00
No Balance, December 31, 1924, Lincoln Cabin Account ..	

Water and Shingle Account

RECEIPTS

From Mrs. Edgar Kaufmann .....	\$1,000.00
From Mrs. Morris Kaufmann .....	1,000.00
From Mrs. Isaac Kaufmann .....	1,300.00
From Harris Pump & Supply Co.—refund ..	7.80
From B. & O. Co.—refund on claim .....	126.20

Total Receipts, Water and Shingle Acct. \$3,434.00

DISBURSEMENTS—WATER ACCOUNT

(Laying new water line.)	
Total disbursements .....	\$1,249.55

E.F.

1926

E.F.

1927

E.F.

1928

E.F.

1929

30

32



E.F.  
1912

E.F.  
1923-  
1924

(76)

1923-24

E.F.  
1913

E.F.

E.F.  
1915

E.F.  
1916

E.F.  
1917

E.F.

E.F.

E.F.  
1920

E.F.  
1922

DISBURSEMENTS—SHINGLE ACCOUNT

Total disbursements .....	\$2,243.71
Total Disbursements—Water and Shingle Account .....	\$3,493.22
Deficit, December 31, 1924, Water and Shingle Account .....	\$ 59.22

Endowment Funds With Fidelity Title & Trust Co.  
 Emma Farm Association Endowment Fund \$400.00  
 A. M. HAST, Treasurer.

1923-24

(77)

EMMA FARM ASSOCIATION

Extracts from the Managing Director's Report  
1908—For the Sixteenth Year—1924

The work of the Emma Farm Association for the year 1924 was the third season at Harmony, Pa. The Camp was opened on June 23 and closed on August 23. Two groups of girls, one group of mothers and babies, and two groups of boys, or a total of 1076 were sent to camp. About 80 persons gave their time gratis as Camp Counselors. At Camp for the whole season, a total of 45,280 meals were served. Besides this, 3058 egg-nogs were given to those who were five pounds or more underweight. For the season, 14,160 quarts of milk were served, almost a quart of milk per child per day. The aggregate gain in weight of those who went to Camp was 2709 pounds or an average gain of over 2.8 pounds per person. These figures are given to present briefly and vividly the scope of the year's work, the most successful in the history of the Association.

The Irene Kaufman Settlement co-operated as usual, registering the children, making visits to the homes, securing the physicians to make the physical inspection, helping to secure the Counselors, taking care of the baggage, and seeing that the children got to Camp.

In addition to the usual activities, a smallpox scare added a great deal of work both at the Settlement and at the Camp, as all children and Counselors had to be vaccinated before going, and then taken care of at Camp until arms were healed. For the first time in the history of the Emma Farm Camp, as far as we know, for the first time anywhere, the children coming to Camp were weighed in relation to their age and height. Every effort was made to bring the underweight children back to normal, while the children who were five or more pounds under weight, were given special attention in the way of food, rest and care. This study of 840 children showed, based upon Baldwin and Wood's tables:

Upon Arrival at Camp:		Per Cent
Underweight .....	528	62.9
Normal weight .....	48	5.7
Overweight .....	255	30.4
Unclassified .....	9	1.0
<b>Total .....</b>	<b>840</b>	<b>100.0</b>

E.F.  
1926

E.F.  
1927

E.F.  
1928

E.F.  
1929

30

E.F.  
1932

E.F. 1912  
E.F. 1923-1924

E.F. 1913

E.F.

E.F. 1915

E.F. 1916

E.F.

E.F.

E.F.

E.F. 1920

E.F. 1922

(78)

1923-24

Upon Leaving Camp, these children were:

		Per Cent
Underweight .....	393	46.8
Normal weight .....	46	5.5
Overweight .....	392	46.7
Unclassified .....	9	1.0

Total ..... 840 100.0

Weight — Gain and Loss

		Per Cent
Gained in weight.....	802	95.4
Neither gained or lost...	19	2.3
Lost in weight.....	19	2.3

Total ..... 840 100.0

The above shows the great health value of the Emma Farm Camp, but it further proves that many children are in need of more than one trip. It is hoped that ways and means can be found of giving those children who are five pounds or more underweight, a second trip to the Camp.

The Emma Farm Camp was inspected in August, without notice, by the State Department of Health with the report "conditions entirely satisfactory."

The Boys' Club Federation, composed of delegates from various parts of the United States and Canada, made a special trip to the Camp in the early part of June, in order to get ideas from the Emma Farm Camp, which was praised as a model camp. More visitors were at Camp this year than ever before, and the Visitors' Book shows foreign countries as well as many parts of the United States. The Camp has not only been a benefit to the children of Pittsburgh, but by example, it has already spread its influence far and wide.

The standard of the Emma Farm Camp can also be measured by the increasing number of persons who are willing to serve gratis as Counselors. In 1924, about 160 applications were received; we had room for only half. Each year has seen the standard of the Counselors raised. This year a special booklet of "Information to Counselors" was prepared, as well as another booklet of "Emma Farm Camp Songs." The supply was exhausted before the end of the season, not only by Counselors, but by visitors asking information.

On the matter of buildings and grounds, many things were done. In June, the Connoquenessing River passed flood stage and damage was done to our grounds. This was all repaired. Through the generosity of Mrs. Isaac Kaufmann, all of the buildings were stained. The Borough of Harmony

1923-24

(79)

could not give us any more water except in case of fire, so a new additional water line was laid to the Borough of Zellenople. The expense of this improvement as well as the reshingling of the building of the Camp, was met by Mrs. Morris Kaufmann, Mrs. Edgar Kaufmann, and Mrs. Isaac Kaufmann. The West coast Lumberman's Association donated the necessary shingles. The Fire Underwriters Association made a re-inspection of our buildings and all of their recommendations were carried out, which included the erection of a special small building for paints, etc. The "Lincoln Log Cabin" was completed, and the collection of Natural History, donated by Frederick Webster, installed. The grounds around the Cabin were graded, and a real "split-rail" fence erected. Additional trees and shrubs were planted over the grounds, roads put into shape, etc. etc. At the end of the year 1924, the buildings and grounds at Harmony were in even better shape than when the Camp opened, as besides these larger matters, everything has been kept in a state of good repair.

The successful administration of the season was due to the Camp Superintendent, Julia P. Teller, and her assistants. Our Staff has been the same for the past three years; Joseph L. Kann, Boys' Recreation Leader; Anna Laufe, Girls' Recreation Leader; Mrs. Jeannette Richardson, Nurse; Dr. Arthur Stewart, Camp Physician; and Charles Kolb, Caretaker. I appreciate the faithful and efficient service of these co-workers at Camp, and of Miss Anna B. Heldman, who handled matters so well at the city end.

The credit for the fine work and great accomplishments of the past year is also shared with the Board of Trustees, especially with the President, Mr. Edgar Kaufmann, and the officers who acted as the Executive Committee on Water and Water Lines; Mr. I. W. Frank was Chairman of the Committee on the Lincoln Log Cabin; Mr. A. J. Sunstein guided the Committees on reroofing and Repainting Buildings, and that of Landscape Work; Mr. Edwin C. May enthused the Committee on Visiting the Camp; Mrs. F. T. Weil and Miss Ruth Kann worked to secure the needed Counselors for the Boys' and Girls' Trips.

A total of 2551 registrations were made by those desiring to go to Camp, and by the 22 agencies who recommended. As far as possible the 1076 who were sent, were selected as being the most in need of an outing from the standpoint of health, and least able to pay. Some paid nothing others paid the self-respecting charge made. No one was

E.F.

1926

E.F.

1927

E.F.

1928

E.F.

1929

F. 1932

E.F. E.F.  
1912 1923-  
1924

E.F.  
1913

E.F.

E.F.  
1915

E.F.  
1916

E.F.  
1917

E.F.

E.F.

E.F.  
1920

E.F.  
1922

(80)

1923-24

kept from Camp because of inability to pay, and about \$4500.00 or about one-fifth of the Budget was collected. The Emma Farm Association kept within the appropriation of the Federation.

In January 1924 the final decree was given in our favor in connection with the tax suit against the County of Butler. Mr. Eugene B. Strassburger handled the matter, gratis, for the Emma Farm Association.

The big loss of the year, was the death of our beloved Mr. A. L. Rauh, to whom I want to pay a personal tribute for his services to the Emma Farm Association and his co-operation with me.

The motto of the Emma Farm Camp is "Health and Happiness." All of you who through work or service, advice or money, co-operated or assisted the Emma Farm Association, have made more than a thousand healthier, happier, and better citizens. May I express my sincere thanks and appreciation to each and all by hoping that you will share in this "Health and Happiness" which you helped to bring about.

SIDNEY A. TELLER,  
Managing Director.

Mrs. M. A. Goodson  
Mrs. Joseph Goodson  
Mrs. Louis Gordon  
Mrs. Paul Winkler  
Mrs. George  
Mrs. Marie Cohen  
Mrs. Frank E. Roper  
Mrs. John W. Sible  
Mrs. W. H. Huger  
Mrs. Lewis M. Stein  
Mrs. F. W. Work  
Mrs. Jacob Reibman  
Mrs. Wm. Johnson  
Mrs. Joe M. Jackson  
Mrs. Samuel Lockman  
Mrs. Harry I. Newman  
Mrs. Frank E. Roper  
Mrs. John W. Sible  
Mrs. W. H. Huger  
Mrs. Lewis M. Stein  
Mrs. F. W. Work  
Mrs. Jacob Reibman

(81)

E.F.  
1926

E.F.  
1927

E.F.  
1928

E.F.  
1929

30

F.  
32

E.F. E.F.  
1912 1923-  
1924

E.F.  
1913

E.F.

E.F.  
1915

E.F.  
1916

E.F.  
1917

E.F.

E.F.

E.F.  
1920

E.F.  
1922

(82)

E.F.  
1926

E.F.  
1927

E.F.  
1928

E.F.  
1929

30

32

E.F. E.F.  
1912 1923-  
1924

E.F.  
1913

E.F.

E.F.  
1926

E.F.  
1915

E.F.  
1916

E.F.  
1917

E.F.

E.F.

E.F.  
1920

E.F.  
1922

(88)

E.F. 1926

(89)

**EMMA FARM ASSOCIATION**

Camp Located Between Harmony and  
Zellenople, Pa.

SIDNEY A. TELLER, Managing Director

**OFFICERS**

**President**

EDGAR J. KAUFMANN

**Vice President**

ISIDORE ROTHSTEIN

**Treasurer**

LEE B. FOSTER

**Secretary**

WM. K. FRANK

**Board of Trustees**

Terms Expire January, 1928

Leon Falk	I. W. Frank
Millard Fisher	Edwin S. Rauh
Lee B. Foster	Maurice W. Spear
	Dr. M. H. Weinberg

Terms Expire January, 1929

Mrs. J. H. Barach	Benjamin Raphael
Dr. Verner Calomon	Isidore Rothstein
Mrs. Saul Lavine	Ferdinand T. Weil
	A. L. Wolk

Terms Expire January, 1930

Louis J. Affelder	Nathan B. Jacobs
Miss Lisa Blum	Edgar J. Kaufmann
Wm. K. Frank	Edwin C. May
	Miss Ella Wertheimer

**Honorary Members**

Mrs Edgar J. Kaufmann  
Mrs. Isaac Kaufmann  
Mrs. Morris Kaufmann  
Dr. Ludwig B. Bernstein, Ex-Officio

E.F.  
1927

E.F.  
1928

E.F.  
1929

30

E.F.  
1932

E.F. E.F.  
1912 1923-  
1924

E.F.  
1913

E.F.

E.F.  
1926

E.F.  
1915

E.F.  
1916

E.F.  
1917

E.F.

E.F.

E.F.  
1920

E.F.  
1922

(80)

E.F. 1926

**EMMA FARM ASSOCIATION**

**Financial Report for the Year 1926**

**Federation or General Account**

**RECEIPTS**

Camp (Including Refund) .....	\$ 75.82
Transportation (Including Refunds) .....	5,832.60
Food (Refund) .....	34.96
Insurance (Credit) .....	78.44
Office Expense Refunds .....	168.62
Donations for Prizes and Special Nourish- ment .....	169.50
Federation of Jewish Philanthropies .....	19,000.00
Interest on Daily Bank Balances .....	25.04

Total Receipts .....\$25,384.98

**DISBURSEMENTS**

Deficit, January 1, 1926 .....	\$ .25
Camp .....	610.28
Transportation .....	1,418.03
Food .....	7,768.20
Insurance .....	970.64
Gas, Electricity and Water .....	656.03
Laundry .....	1,082.77
Administration .....	1,605.82
Wages .....	4,260.03
Salaries .....	3,474.17
Maintenance .....	3,082.94

Total disbursements .....\$24,929.16

Balance, December 31, 1926, Federation or  
General Account .....\$ 455.82

E.F. 1926

(81)

**Special Purpose Account**

**RECEIPTS**

From Mrs. Morris Kaufmann for Automatic Scale .....	\$ 150.00
From Mr. E. J. Kaufmann for Automatic Scale .....	150.00
Total Receipts .....	\$ 300.00

**DISBURSEMENTS**

For Toledo Scale .....\$ 300.00

No Balance, Special Purpose Account.....

**Endowment Funds With Fidelity Title & Trust  
Company**

January 1, 1926, Emma Farm Association Endowment Fund .....	\$ 439.50
September 1, 1926, Accrued Interest Added to Principal .....	24.86
October 11, 1926, from Mr. and Mrs. Sidney A. Teller in memory of Josephine Teller..	100.00

December 31, 1926, Total in Endowment  
Funds .....\$ 564.36

L. B. FOSTER, Treasurer.

E.F.  
1927

E.F.  
1928

E.F.  
1929

E.F.  
1930  
1932

E.F. E.F.  
1912 1923-  
1924

E.F.  
1913

E.F. E.F.  
1915 1926

E.F.  
1915

E.F.  
1916

E.F.  
1917

E.F.

E.F.

E.F.  
1920

E.F.  
1922

(82)

E.F. 1926

### EMMA FARM ASSOCIATION

#### Extracts From the Managing Director's Report 1908—For the Eighteenth Year—1926

A total of 1004 persons were taken to Camp during the season of 1926, which consisted of five trips of twelve days each; two for girls, two for boys, and one for mothers and infants. Of the above persons 71 children went twice, making the Camp population for the season equal to 1075 persons. During the season 44,535 meals were served, including 16,280 quarts of milk. Through the gifts of Mr. Lee B. Foster and Mr. Wm. K. Frank, special eggs were given to the greatly underweights, some 4328 drinks being prepared for the children. The average gain of all who went to Camp was 2 pounds per person. The success of the Camp end was due to the "big six" at Camp, who have been together for these past five seasons: Julia Pines Teller, Camp Superintendent; Anna Laufe Perlow, Girls' Counselor; Joseph L. Kahn, Boys' Counselor; Jeannette K. Richardson, R. N., Nurse; Dr. Arthur Stewart, Camp Physician; and Charles Kolb, Camp Caretaker.

The City end of the work was handled at the Irene Kaufmann Settlement through the Personal Service Department, by Anna E. Heldman and her assistants. All the work of registration, notification, collection of money paid, physical examinations, collection and distribution of baggage, and getting the groups started, etc., was done by this Institution and its workers. It will be recalled that the Emma Farm Association was one of the first, if not the first, "charity" camp in the country to institute some payment from those who could afford same. While no one has ever been prevented from going because of inability to pay, the policy of "self-respect through self support" has been made stronger each year. It will be noted that the amount of money collected in 1926 was ten times as great as the first year of our efforts in this direction some ten years ago, and this year exceeded \$5500.00. The work of the City was also made possible through the assistance of doctors and dentists, who examined the children before going to Camp. Dr. Simon Victor and Dr. Benjamin Perlow deserve special mention and thanks. An automatic scale, the gift of Mrs. Morris Kaufmann and Mrs. Edgar J. Kaufmann, was of great assistance in connection with the health work of the Camp which was co-ordinated with the Health Work of the Irene Kaufmann Settlement.

E.F. 1926

(83)

As usual, preference was given to those children recommended by social agencies, schools, doctors, etc. We received lists from the United Hebrew Relief Association, Montefiore Hospital Dispensary, Council of Jewish Women, Girls' Welfare Committee, Public Health Nursing Association, Mothers' Assistance Fund, Juvenile Court; Moorhead, Franklin, McKelvey, Somers, Forbes, Letsche, Miller, Hancock, Madison, Irene Kaufmann, Open Air, Rose, Watt, Minersville, and Knox Schools; and from private physicians. The persons so recommended were given first consideration. As to be expected more persons wanted to go than could be accommodated; some 1855 applied, over 1500 registered, and 1004 were sent.

A manual of information for Counselors was prepared by Mr. and Mrs. Teller, and a sort of training course given to each group. With some counselors coming back each year who have been at Camp before, the problem of administration is easier, but the problem of selection grows harder as the number of applications increase. This year a total of 178 applications were received offering to serve on 234 trips. We took 87 persons on 92 trips (capacity) and had to refuse 91 persons altogether. During the past five years, since the new Camp was opened, 547 persons have offered to serve as Counselors at Camp. Out of these 284 were taken, of which 204 have served one year; 53, two years; 17, three years; 7, four years; and 3, five years. These persons have given about 450 trips of service. We feel that the Emma Farm Association has established a unique record in this direction, especially considering that all of the above Counselor service was gratis and volunteer. Some of those who have acted as Counselors, were children at our old Camp years ago.

We had measles during the mothers' and infants' trip, but met the situation before it became epidemic or panic. The health standards become easier of application each year, and even visitors' day this season did not disturb the rest period in the Sunday's program. The Camp's health and morale was very good notwithstanding an unusually wet, cold, gloomy summer, and the fad of the times which affects the younger girls "dieting." Out of the mothers' and infants' trip has grown a couple of Mothers' Clubs, which meet at the Settlement, and the women come in contact with Mrs. Teller and Mrs. Perlow during the year, and are encouraged to keep up the things that they did while at Camp in the matter of health habits, recreation, etc.

Little need be said on the physical side, as it almost goes without saying that buildings, grounds,

E.F.  
1927

E.F.  
1928

E.F.  
1929

F  
32

E.F. E.F.  
1912 1923-  
1924

E.F.  
1913

E.F. E.F.  
1915 1926

E.F.  
1916

E.F.  
1916

E.F.  
1917

E.F.

E.F.

E.F.  
1920

E.F.  
1922

(84)

E.F. 1926

and equipment were kept up, and minor improvements were made, as well as doing a little planting towards the completion of the landscape program. The year was closed with things in good shape, and with a financial balance, we coming within the budget we had planned.

An army of boys and girls, mothers and babies have been given health, happiness and many other gifts through the Emma Farm Association. The Community—through those who make up the Federation of Jewish Philanthropies—has given much to those who need it, by its support in service and in money, of the Emma Farm Association. Let us continue in our good work.

SIDNEY A. TELLER,  
Managing Director.

*[Faint, mostly illegible text, possibly bleed-through from the reverse side of the page.]*

(85)

E.F.  
1927

E.F.  
1928

E.F.  
1929

30

32



E.F.E.F.

1912 1923-

1924

E.F.

1913

E.F.

E.F.

1926

E.F.

1915

E.F.

1916

E7

1927

E.F.

1917

E.F.

E.F.

E.F.

1920

E.F.

1922

(86)

(91)

E.F.

1928

E.F.

1929

30

32

E.F.E.F.  
1912 1923-  
1924

E.F.  
1913

E.F. E.F.  
1926

E.F.  
1915

E.F. E.F.  
1916 1927

E.F.  
1917

E.F.

E.F.

E.F.  
1920

E.F.  
1922

(92)

(93)

E.F.  
1928

E.F.  
1929  
30

F.  
32

E.F.E.F.  
1912 1923-  
1924

E.F.  
1913

E.F. E.F.  
1915 1926

E.F.  
1915

E.F. E.F.  
1916 192

E. E.F.

1928

E.F.

E.F.  
1920

E.F.  
1922

(94)

1928-29

(95)

## EMMA FARM ASSOCIATION

Camp Located Between Harmony and  
Zelienople, Pa.

SIDNEY A. TELLER, Executive Director.

### OFFICERS

#### President

EDGAR J. KAUFMANN

#### Vice President

ISIDORE ROTHSTEIN

#### Treasurer

LEE B. FOSTER

#### Secretary

WM. K. FRANK

### BOARD OF TRUSTEES

Terms Expire January, 1930

Mrs. Louis J. Affelder Nathan B. Jacobs  
Lisa Blum Edgar J. Kaufmann  
Wm. K. Frank Edwin C. May  
Ella Wertheimer

Terms Expire January, 1931

Lee B. Foster Leon Falk, Jr.  
Millard Fisher Daniel Hammerschmidt  
Dr. George J. Feldstein Cass Sunstein  
Maurice W. Spear

Terms Expire January, 1932

Mrs. S. Leo Ruslander Miss Helen Rauh  
Norman Kann Nathaniel Spear, Jr.  
Benjamin Raphael Isidore Rothstein  
Ferdinand T. Weil

### Honorary Members

Mrs. Edgar J. Kaufmann Mrs. Isaac Kaufmann  
Mrs. Morris Kaufmann I. W. Frank  
Dr. Ludwig B. Bernstein, Ex-Officio

E.F.

1929

F.  
32

(96)

1928

EMMA FARM ASSOCIATION  
STATEMENT OF RECEIPTS AND  
DISBURSEMENTS

January 1 to December 31, 1928

RECEIPTS

Balance Cash on Hand, January 1, 1928 (Overdraft) .....	\$ 77.12
From Federation of Jewish Philanthro- pies .....	18,500.00
From Special donations (chiefly for cottages) .....	1,015.00
From Children's Radio Fund .....	75.69
From transportation charges .....	7,186.13
From sale of supplies .....	308.36
From insurance and expense refunds .....	293.98
From interest on bank balances .....	32.23
Total .....	\$27,334.27

DISBURSEMENTS

Salaries and wages .....	\$8,690.78
Transportation .....	1,450.68
Food .....	7,761.78
Maintenance of camp .....	5,921.50
Administrative expense .....	1,494.47
Construction of cottages .....	950.00
Purchase of radio (from Chil- dren's Radio Fund) .....	75.69
	\$26,344.90

CASH BALANCE, DECEMBER 31, 1928.....\$ 989.37

L. B. FOSTER,  
Treasurer.

(97)

1928

EMMA FARM ASSOCIATION

EXTRACTS FROM THE EXECUTIVE  
DIRECTOR'S REPORT

1908—FOR THE TWENTIETH YEAR—1928

With the end of 1928 the Emma Farm Association has completed twenty years of service to the infants, boys and girls, and mothers of Pittsburgh. Starting in a small way at Harmarville, Penna., it now has one of the model camps of its kind in the country, located on a beautiful site on the Connoquenessing River near Harmony and Zelle-nople, Penna. The Emma Farm Camp has main-tained a successful record these many years through the generous financial support of the community as expressed through the Federation of Jewish Philanthropies; the intelligent interest and guidance of its Board of Trustees; the devotion of its staff, many of whom have been associated with the Camp since 1917; the co-operation and assist-ance of the Irene Kaufmann Settlement, which has taken care of the city end of the work; and the services of the hundreds of young men and women who have acted as Counselors, giving their time gratis. We hereby express our appreciation to all who have made the fine work of the Emma Farm Association possible.

Registration was stopped when the number ex-cceeded 1,500. Of these 1,023 were taken, 54 twice, or the total of 1,077 outings, keeping the Camp filled to capacity on its one trip for mothers and infants; two for boys; and two for girls; each hav-ing about 200. We co-operated with the Jewish and other Social Agencies of the community, the public schools, and physicians as indicated in the following list. Those who went to Camp in 1928 were recommended by:

Jewish Family Welfare Association ..	66
Montefiore Hospital Dispensary .....	77
By both J. F. W. A. & M. H. D. ....	45
Girls' Welfare League .....	3
Public Health Nursing Association .....	7
Mothers' Assistance Fund .....	3
Pittsburgh Bureau for Jewish Chil- dren .....	6

E.F.E.F.  
1912 1923-  
1924

E.F.  
1913

E.F. E.F.  
1926

E.F.  
1916

E.F.  
1928

E.F.  
1920

E.F.  
1922

E.F.  
1929  
30  
32

(98)

1928

E.F.E.F.  
1913 1923  
1924

E.F.  
1913

E.F. E.F.  
1922

E.F.  
1915

E.F. E.F.  
1916

E.F.  
1928

E.F.

E.F.  
1920

E.F.  
1922

1928

(99)

## EMMA FARM ASSOCIATION

### EXTRACTS FROM THE EXECUTIVE DIRECTOR'S REPORT

#### 1908—FOR THE TWENTIETH YEAR—1928

With the end of 1928 the Emma Farm Association has completed twenty years of service to the infants, boys and girls, and mothers of Pittsburgh. Starting in a small way at Harmarville, Penna., it now has one of the model camps of its kind in the country, located on a beautiful site on the Connoquenessing River near Harmony and Zelienople, Penna. The Emma Farm Camp has maintained a successful record these many years through the generous financial support of the community as expressed through the Federation of Jewish Philanthropies; the intelligent interest and guidance of its Board of Trustees; the devotion of its staff, many of whom have been associated with the Camp since 1917; the co-operation and assistance of the Irene Kaufmann Settlement, which has taken care of the hundreds of young men and women who have acted as Counselors, giving their time gratis. We hereby express our appreciation to all who have made the fine work of the Emma Farm Association possible.

Registration was stopped when the number exceeded 1,500. Of these 1,023 were taken, 54 twice, or the total of 1,077 outings, keeping the Camp filled to capacity on its one trip for mothers and infants; two for boys; and two for girls; each having about 200. We co-operated with the Jewish and other Social Agencies of the community, the public schools, and physicians as indicated in the following list. Those who went to Camp in 1928 were recommended by:

Jewish Family Welfare Association.....	66
Montefiore Hospital Dispensary.....	77
By both J. F. W. A. & M. H. D.....	45
Girls' Welfare League.....	3
Public Health Nursing Association.....	7
Mothers' Assistance Fund.....	3
Pittsburgh Bureau for Jewish Children.....	6

E.F.

1929

30

F.  
1932

100

1928

12/03

E.F.F.  
1911-1923  
1924

E.F.  
1913

E.F.  
1914

E.F.  
1915

E.F.  
1916

E.F.  
1917

E.F.

E.F.  
1920

E.F.  
1921

who make the work possible, and turn the Camp motto, "Health and Happiness," into living reality, should visit the beautiful Emma Farm Camp some time each year during July and August and see the work going on. One visit will tell you more than all the reports and oratory, how the Emma Farm Camp is helping to build the coming generation.

SIDNEY A. TELLER,  
Executive Director.

*[Faint, mostly illegible text, likely bleed-through from the reverse side of the page.]*

E.F.  
1929  
30  
932

E.F.E.F.  
1917 1923  
1924

E.F.  
1913

E.F. E.F.  
1914  
E.F.  
1915

E.F. E.F.  
1916 1917

E.F.  
1918

E.F.

E.F.  
1919

E.F.  
1920

1929

103

E.F.

1930

1932

E. F. E. F.  
1917 1923  
1924

E. F.  
1913

E. F. E. F.  
1912

E. F.  
1915

E. F. E. F.  
1916 1917

E. F.  
1928

E. F.  
E. F.  
1929

E. F.  
1922

E. F.  
1930

E. F.  
1932



106

E.F.F.

1911 1923

1924

E.F.

1913

E.F. E.F.

19

E.F.

1915

E.F.

1916

E.F.

19

28

E.F.

E.

E.F.

19

30

E.F.

192

109

E.F.

1931

F

1932

2

E.F.F.  
1911 1923  
1924

E.F.  
1913

E.F. E.F.  
1914 2

E.F.  
1915

E.F. E.F.  
1916 1917

E.F.  
1918  
28

E.F.

E.

E.F.

E.F.

1931

1932

E.F.  
1932

E. F.  
1911 1920  
1921

E. F.  
1913

E. F. E. F.  
1914 2

E. F.  
1914

E. F. E.  
1916 19

E. F.  
1918

E. F.

E.

E. F.

E. F.

E. F.  
1932

