

Louis Rice

CERTIFICATE
FOR



SHARES
OF THE

KETHER TORAH
CONGREGATION

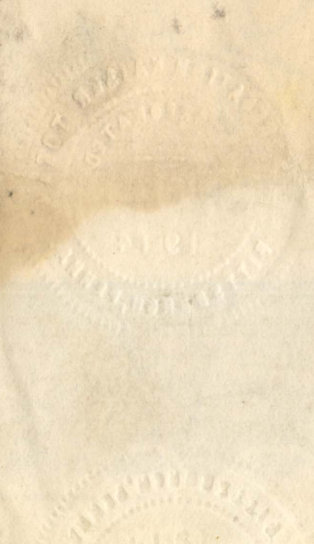
ISSUED TO

Max Rice

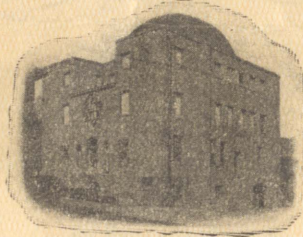
DATED

Mar. 16 1925

693
708



NUMBER
13



SHARES

Kether Torah Congregation

Webster and Erin
Pittsburgh, Pennsylvania

The Kether Torah Congregation, a Corporation of Pennsylvania, hereinafter called the CONGREGATION, will on the First Day of January, 1930, pay to the bearer, on presentation of this Debenture, the sum of ONE HUNDRED (\$100.00) DOLLARS. The CONGREGATION hereby charges with such payment of its undertaking all its property whatsoever and wheresoever, both present and future.

*Paid
Sept 26-1925*

This Indenture is one of a series of One Hundred Debentures, each for securing the Principal sum of (\$100.00) issued or about to be issued by the CONGREGATION.

WITNESS the Corporate Seal of the said Kether Torah Congregation and the signatures of its proper officers at Pittsburgh this Fifth Day of January, 1925.

Attest:

Kether Torah Congregation

B. Sinder
TREASURER

By *J. Katz*
PRESIDENT

SHARES \$100 EACH