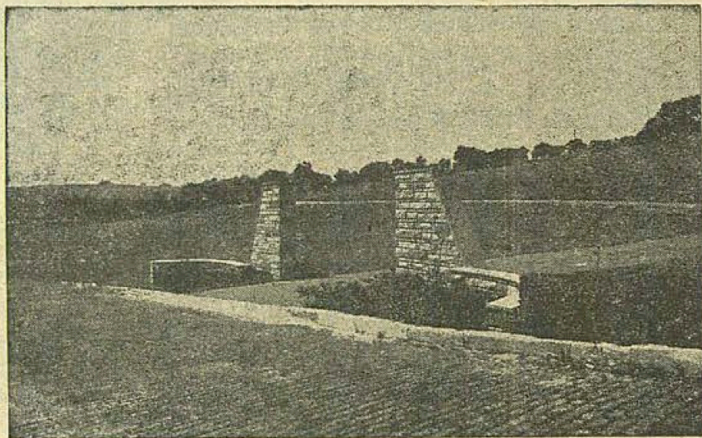


Beth Abraham Memorial Park

MEYER FIMAN, Chairman—HAZEL 1-7828

THE PUBLIC is offered a family burial estate in one of Pittsburgh's finest Jewish cemeteries. Everlasting constant supervision is always maintained to beautify and give comfort with satisfaction to members of families visiting the resting place of their dear departed ones.



A view of the newly constructed gateway entrance to the new addition to the beautiful cemetery grounds. Located on Rte. 51 in Carrick, Pa.

The prices for all lots are uniform and deed of ownership to plots are issued, so that you may know that such single or family plots remain forever the property of every individual purchaser and their families.

Cemetery representatives are available at all times. For detailed information phone or write. All inquiries will be given prompt attention.

BETH ABRAHAM CONGREGATION

5741 BARTLETT ST.

JA. 1-0101

PITTSBURGH

Louis Ostrosky, Pres.

Dave Kart, 1st V. Pres.

Abe Opter, 2nd V. Pres.

I. Aleck Brand, Secy.

Benjamin Hartzberg, Treas.