

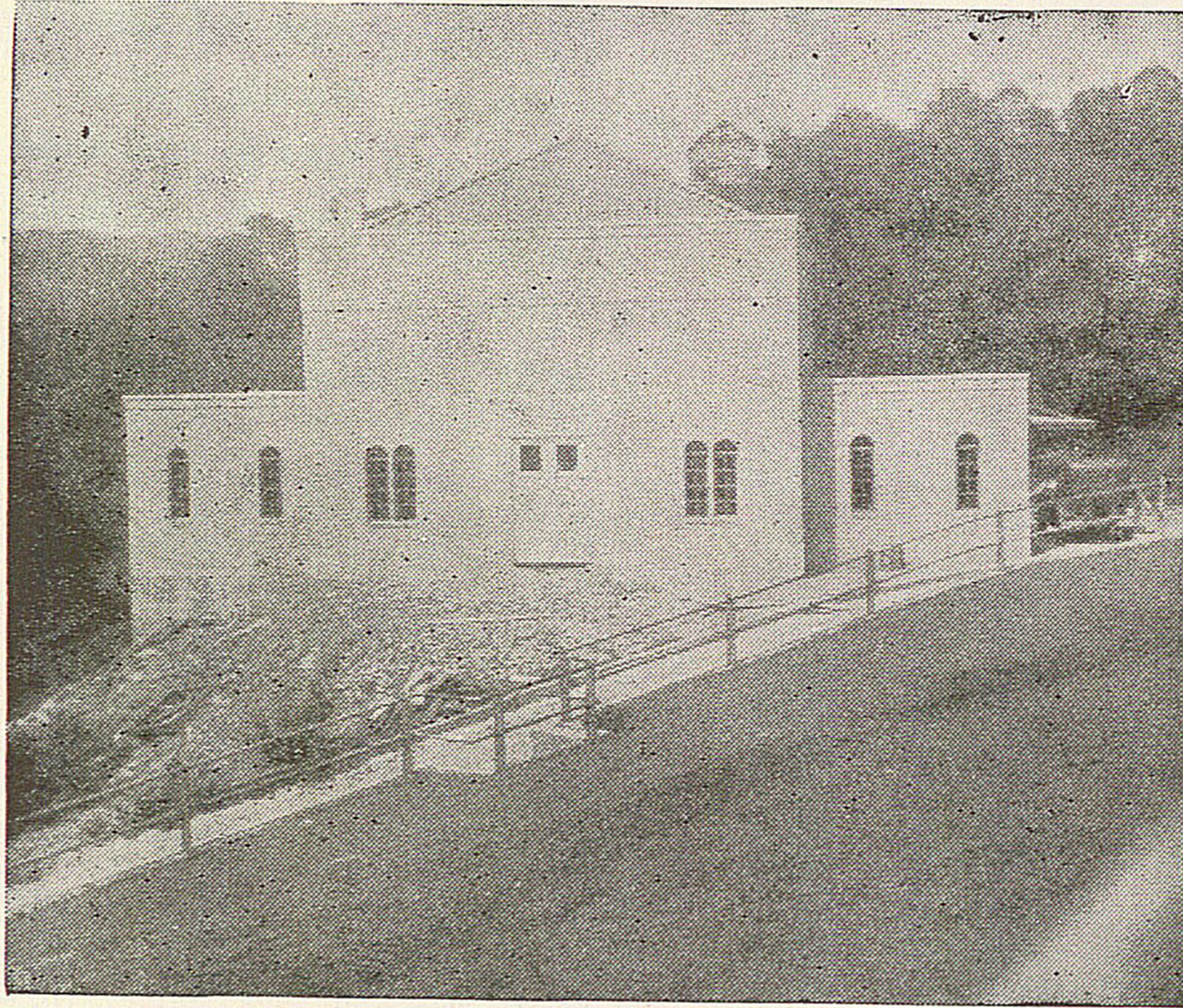
# Beth Abraham Cemetery Chapel Dedication Sunday

On Sunday, August 22, at 1 P. M., the Congregation Beth Abraham Cemetery Association will dedicate the new beautiful chapel just erected on the new grounds of the cemetery, located in Carrick.

The officers and directors invite all members and friends to be present to witness the spiritual ceremonies in honor of the dedication of this chapel.

*The ceremonies will be conducted by Rabbi A. M. Ashinsky, Rabbi B. A. Lichter and Rev. J. Julius Bloom. Speakers: Honorable Elder W. Marshall and Leonard S. Levin, Esq.*

*Dedication Committee: Jerome Solomon, Esq., Chairman; Alexander Randall, Assistant.*



**Officers of the Organization:**

S. Shafer, Pres.  
David Solominsky, V. Pres.  
M. Ostrovsky, Sec.  
S. Malitovsky, Treas.

**Building Committee:**

Jacob Grossman  
David Kart  
Louis Sniderman  
Louis Mandelblatt  
M. Fiman

Everybody is Welcome  
to Join in the  
Dedication Services

Route: Through the Liberty Tubes, turn left, out Saw Mill Run Boulevard and about one-fourth mile on Route 51.

*The following concerns congratulate the officers and directors of the Beth Abraham Cemetery in their efforts and on an ambition realized.*

*Roofing by*  
**FRANK LIMBACH**  
  
ROOFING  
&  
SHEET METAL  
  
1722 E. OHIO ST.  
CE 5600

*Lumber and Millwork*  
By  
**Center Lumber Co.**  
  
LUMBER  
&  
MILLWORK  
  
1848 CENTER AVE.  
GR 1240

*Tile Work*  
**Standard Mantel & Tile Company**  
1106 FIFTH AVENUE AT 8459

*Brick Work*  
**WILLIAM LIFF**  
5552 BLACK STREET MO 2610

*Steel Work*  
JOSEPH STEVENS, Rep.  
**GUIBERT STEEL COMPANY**  
FE 2960 3201 W. CARSON ST. FE 4740

*Bricks for Construction*  
**D. J. KENNEDY COMPANY**  
BUILDERS SUPPLIES  
7535 THOMAS BLVD. CH 7100

*Painting*  
**DAVID MOLEVER**  
6318 ALDERSON STREET JA 2626

*Plumbing*  
**BORRIS MANDEL**  
204 CRAFT AVENUE MA 0484

*Architect*  
**ALEXANDER SHAROVE**  
BERGER BUILDING CO 0885

*Electrical Fixtures*  
1852 CENTER AVE. **DANIELS ELECTRIC COMPANY, Inc.** ATlantic 6163