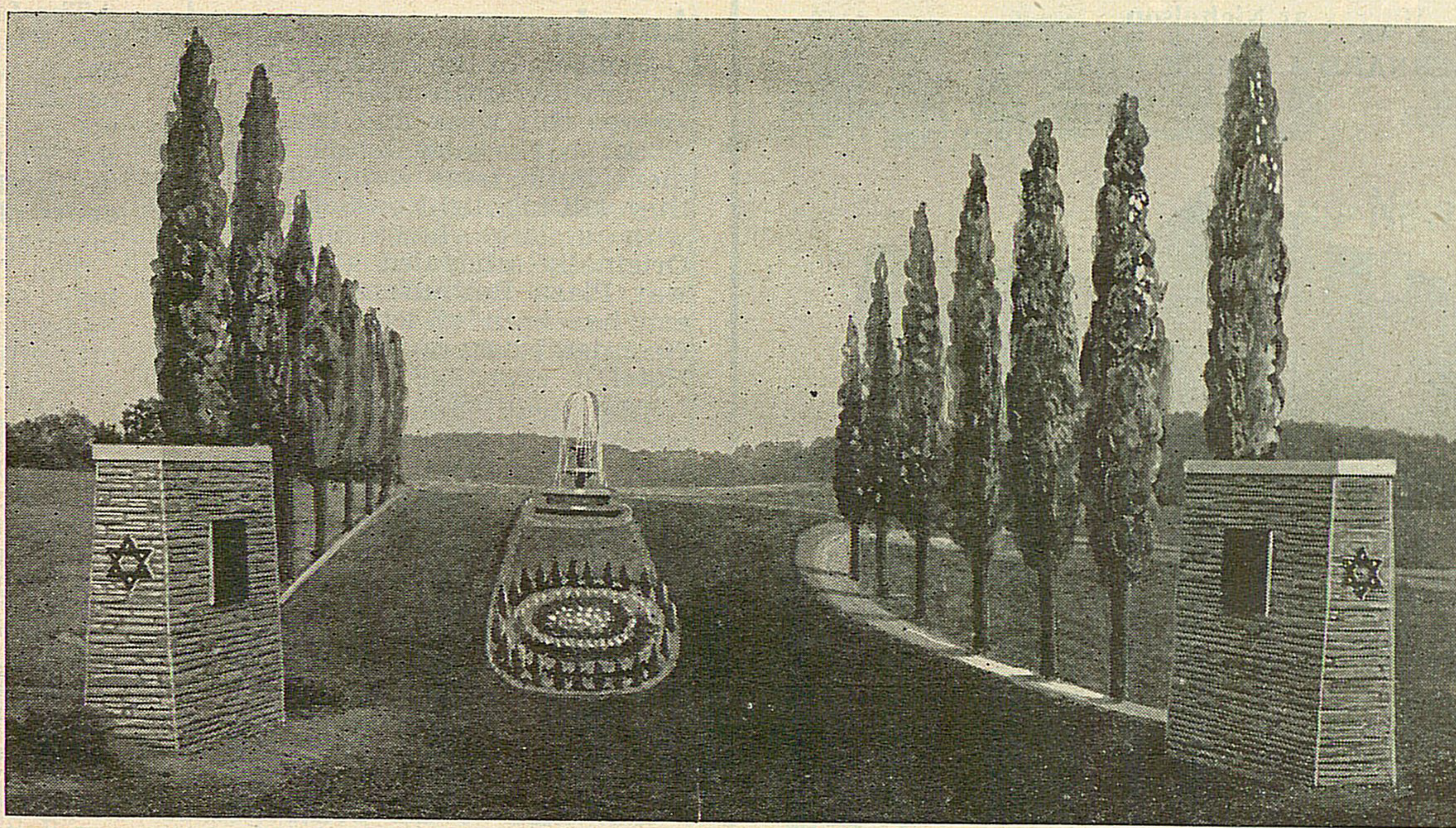


DEDICATION OF....

POALE ZEDECK MEMORIAL PARK CEMETERY

SUNDAY, SEPTEMBER 12, 2 P. M.



The Public Is Cordially Invited To Witness the Dedication Exercises Of the Beautiful New

Poale Zedek Memorial Park Cemetery **Richland Township, Allegheny County**

Drive north on Route 8 from Etna to Dickey Road (1 mile beyond Turnpike entrance), turn left and drive approximately ½ mile to Meridian Road. Turn right to cemetery.

Rabbi Dr. Joseph Shapiro will dedicate the cemetery and Cantor Uri Frenkel will give several renditions



RABBI DR. JOS. SHAPIRO

The Cemetery Committee has spared no expense or effort to give this community one of the most beautiful memorial parks in the country. The outstanding memorial park designers in America — George W. McClure and Son of Buffalo, N. Y. — planned and designed the entire layout.

As soon as the season and weather permit, hundreds of trees and shrubbery will be planted to complete the plans of the engineers and designers of the park.

For information, call the Synagogue office
HAzel 1-2462 or HAzel 1-2565

Poale Zedek Memorial Park Cemetery Committee

BARNETT MARCUS
LEON GOTTLIEB
MAURICE CHAITKIN, Esq.
HARRY N. MORRIS
MORRIS A. ROBINS,
President

DAVID KRAMER, Esq.
MORRIS MAZER
EMIL LEBOVITZ
JOSEPH GOLDSTEIN
DR. JOSEPH SHAPIRO,
Rabbi



MORRIS A. ROBINS, President