



*“Where the Memories of
Beautiful Lives will be
Kept Beautiful Always”*

CONGREGATION TIFERETH ISRAEL
SOUTH JEFFERSON STREET
NEW CASTLE, PA.

Officers

MAURICE L. SAMUELS, President
I. GINSBURG, Vice President
M. SIGLER, Secretary
EDWARD MASTERS, Treasurer

Directors

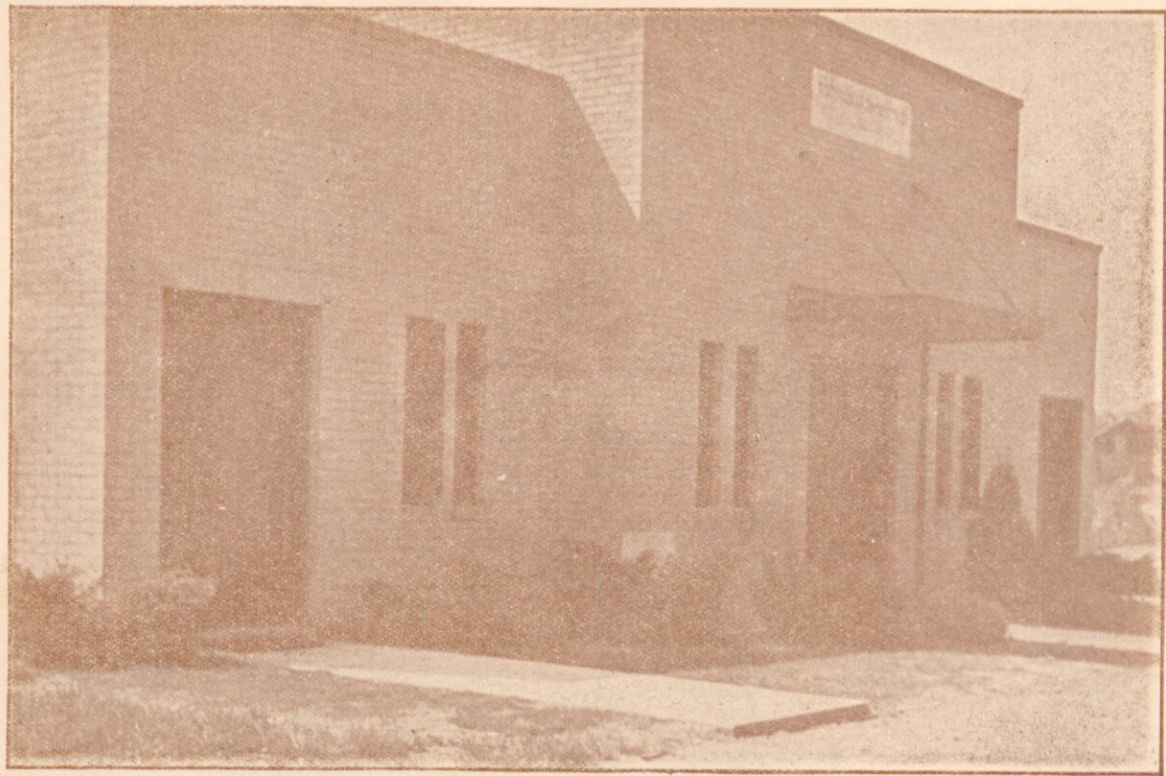
H. WALDMAN
A. KATZ
HARRY ROSENBERG
P. ALPERN

L. RUZEWICH
MEYER LEVINE
SIMON COHEN
SAM GINSBURG



Tifereth Israel Cemetery is owned and operated by the Congregation.

The Records and Finances of the Cemetery are under the direction of the Executive Officers of the Congregation, and are segregated from other funds.



FRONT OF CHAPEL

The Cemetery Board and Cherva Kadasha

MEYER LEVINE, President ✓
HARRY WALDMAN, Vice President
L. RUZEWICH, Treasurer ✓
MAURICE L. SAMUELS, Secretary

A. FRANK ✓	SAM EDELSTEIN ✓
JULIUS ALPERN ✓	NATHAN ROSEN ✓
C. ALANSKY	NATHAN LOVE ✓
S. KLEIN ✓	HARRY ROSENBERG ✓

The Women of Cherva Kadasha

MRS. A. FRANK ✓	MRS. FANNIE WEINBERG ✓
MRS. P. WINNICK ✓	MRS. ISAAC COHEN ✓
MRS. ELLIS LEVINE ✓	MRS. JACOB LEVINE ✓
MRS. J. ROSEN ✓	MRS. SIMON RUBENSON ✓
MRS. S. SLOVONSKY ✓	

Building Committee

L. RUZEWICH, Chairman	
MEYER LEVINE ✓	HARRY WALDMAN
J. ALPERN ✓	SAM EDELSTEIN ✓
A. FRANK ✓	MAURICE L. SAMUELS



VIEW OF OLD SECTION

Facts About the Cemetery

The Congregation Tifereth Israel was organized in 1896 and three years later 1899 the Cemetery plot was purchased by the Congregation Tifereth Israel. The committee appointed to buy the plot were as follows; B. Grossman, Max Weinberg, Isaac Cohen, Jacob Levine and Nathan Rabinovitz.

In 1901 the first Cherva Kadasha was organized with the following officers; Rabbi Louis Nachman, President, Isaac Grossman, Vice President, Julius Alpern, Secretary, Max Weinberg, Treasurer, and consisted of 33 members.

In 1907 Jacob Levine was elected president of the Cherva Kadasha and served until his death 1932.

During Jacob Levine's term the following officers served with him; H. Edelstein, M. Moresky, Jacob Love, A. Frank, Sam Goldberg, S. Rubenson, David Frank, L. Ruzevich, H. Aronson, Isaac Cohen, Max Weinberg and S. H. Levine.

Tifereth Israel Cemetery comprises of a six acre tract of land which one and one-half acre was originally laid out in 1899, later four and one-half acres was added in Neshannock Township, Lawrence County, Pa.

The Cemetery is open every day during daylight and may be visited any day except Saturday and Sacred Holidays.

From its very inception, the Cemetery has been developed in layout and landscaping on a preconceived plan spread over a span of years, and in its development it has been not only an eternal resting place for the departed but a haven of comfort and a peaceful retreat for the living who visit it.

The use of the Cemetery is not limited to the membership of the Congregation and its use has been availed of by all elements of the Jewish Community of Western Pennsylvania. Single grave and various sized plots are available in the various laid out sections at prices fixed by an invariable schedule. Purchases and reservations may be made by seeing or calling the Chairman.

The first interment was in 1901 when Morris Hirsch was laid to rest.

A committee was appointed by Maurice L. Samuels, president of the Tifereth Israel Congregation in June 1936 to raise funds to build a chapel, the following were appointed; L. Ruzewich, Chairman, Meyer Levine, H. Waldman, A. Frank, J. Alpern, Sam Edelstein, M. L. Samuels and Nathan Rosen.

The contract was let in July 1936 and was dedicated July 4th, 1937.

Cemetery Route

From Tifereth Israel Congregation, Up South Jefferson Street through the public square up North Jefferson Street, Make a left turn on Leasure Avenue, pass Jameson Memorial Hospital to Cemetery.



VIEW OF NEW SECTION

Rules and Regulations

Upon full payment for grave or plot, a certificate of Easement is granted the owner, which confers upon the owner the right to inter, according to the usages and customs of Traditional Judaism, immediate members of the Owner family or its dependents, according to the grave capacity of the particular plot. This easement is personal to the family and may not be sold or traded or encumbered, except with express approval of the Board of the Congregation.

The care of plots and graves is reserved exclusively to the Cemetery, free of tax or charge, except a nominal annual charge for grave care and the actual cost of flowers, shrubs or trees.

Graves and plots, of various size and in different sections, may be purchased, for use or for reservation, by any family of the Jewish faith by paying cash in case of use and for cash and terms where for reservation. Fixed price schedules are maintained without variance or favor. There is no limitation or preference as to choice of location except to membership graves in the single grave sections. A net cash purchase may be made by paying 25% cash on a reservation and three semi-annual 25% payments secured by promissory notes, conditioned upon immediate pre-payment when use is necessary.

In order to obtain a permit for a headstone or tombstone erection, certain formulas are presented. For information see the Chairman of the Cemetery Board.

The Cemetery Officials and the Officers of the Congregation are ever at your service for information and advice on any matter pertaining to the Cemetery.

The Schedule of Prices

The Schedules apply to all purchasers alike and are not varied or deviated from under any circumstances, except that members in good standing have a rate of \$50.00 to \$100.00 per grave and non-member's rates are from \$100.00 to \$1,000.00 per grave.

Where the plot is to be used immediately, cash payment is required, except where security is tendered for not more than one-half of the purchase price, and is satisfactory to the Cemetery Board. Where the plot is reserved, 25% is payable immediately with three equal semi-annual payments secured by promissory notes. On reserved plots, interment use anticipates the then unpaid portion.

No monument or headstone may be erected on any grave or plot on which there is any unpaid balance.

Grave Care and Memorial

Grave Care

The purchase Price of a Plot covers perpetual care, without extra charge, the upkeep of the lawn of and around the plot but does not include plantings on the graves or the care of the individual graves. For that there is a service charge of \$3.00 per annum payable to the Treasurer on Bills rendered.

By the prepayment of \$100.00 to the Cemetery's Endowment Fund, the Cemetery Board will guarantee free perpetual care of the grave.

Memorials

Both in the Synagogue, in the Chapel and on the Cemetery grounds, various Memorials, ranging at various costs are available to perpetuate dear memories, particularly Plates bearing name of departed with Hebrew and English dates of death, at the nominal cost including the plate, placed in the Memorial Tablets which adorn the walls of the Synagogue. If you are interested, communicate with the Congregational Office.

