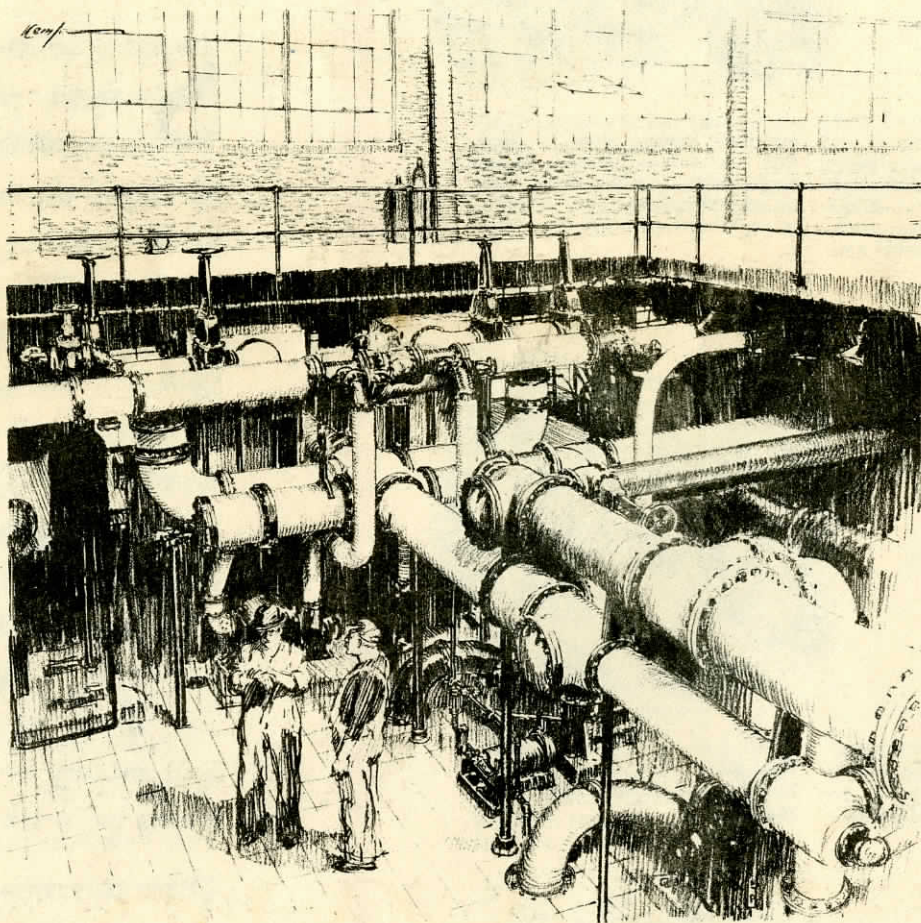


Presenting Our Desire and Ability

TO SERVE YOU WELL



B. FLOERSHEIM & COMPANY, INC.

PITTSBURGH, PA.

INDUSTRIAL

CENTRAL POWER STATION

STEEL MILL

PIPING

ENGINEERS

CONTRACTORS

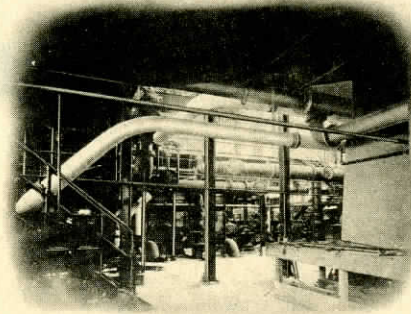
COUNSELLORS

WHY

We Merit Your Consideration

TRUMBULL
CLIFFS
FURNACE CO.,
Warren, Ohio

FREYN
ENGINEERING
COMPANY,
Chicago, *Engineers*

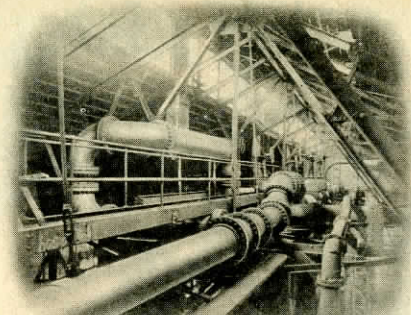


This piping installation included all power house piping for eight boilers (250-lbs. 125 degrees superheat) and three 10,000 k.w. turbo-generators. In addition, all incidental and

auxiliary piping was installed for two turbo-blowers, three large river pumps, blast furnaces, coke plant, furnace stoves, gas washers and all yard piping.

UNITED
ELECTRIC
LIGHT CO.,
Braddock, Pa.

DAY &
ZIMMERMANN,
Incorporated,
Philadelphia
Engineers

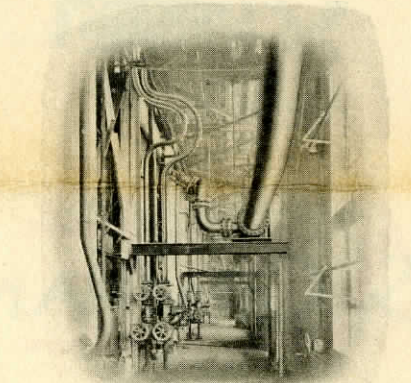


This central station power plant contract provided for the piping for 4 boilers (300-lbs. 160 degrees superheat), 2 turbo-gen-

erators, circulating, service and feed water pumps, condensers, heaters and all auxiliary equipment.

BY-PRODUCTS
COKE
CORPORATION,
Chicago, Illinois

SARGENT &
LUNDY, Inc.,
Chicago, *Engineers*



The contracts for both the coke plant and Federal Furnace plant comprised complete piping for two boiler houses (600-lbs. and 250-lbs. 700 degrees total temperature) and for six turbo-blowers with all auxiliary

equipment. The high pressure lines were of the "Sarlun" type welded joint. Incidental and yard piping for blast furnace, coke ovens and pumps were also included.

SOME of the largest and most notable piping installations in the country have been effected by us for engineers and corporations whose exacting standards permit of only the highest grade workmanship and materials. Being thus favored, and having a background of experience extending over a quarter of a century, we have built up and have at your disposal, an organization of *specialists* in piping design, materials and erection. This organization can, if given the opportunity, readily prove its superiority and ability to effect savings in time and money over alternate arrangements on work of any size or kind.

These advantages are backed by the *largest and most complete* organization for the fabrication of piping materials in the world. **CRANE CO.**, whose materials we furnish exclusively, except when specified to the contrary, and with whom we have been closely affiliated for many years, are recog-

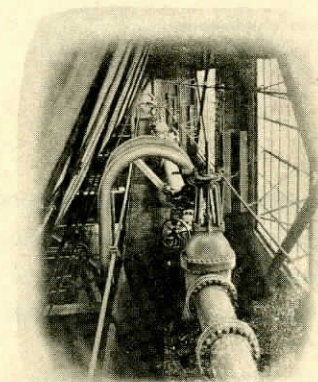
ON the basis of our *experience, facilities, source of materials, class of workmanship and satisfied clients*, we respectfully request that you include us in your schedule to receive inquiries on your major piping requirements.

nized as the foremost manufacturers of *complete lines of highest grade valves and specialties, fittings, fabricated pipe*, and all incidental items including such details as bolts and gaskets. This **COMPLETE MANUFACTURING SERVICE**, combined with their facilities located throughout the country, are such as enable us to place material on the ground anywhere in ample time to insure the continuity of the work and its completion in time to meet your requirements.

The accompanying summaries of some of our contracts will be of interest as an indication of the scope of our facilities. *Complete satisfaction of the customer was achieved in every instance.* This statement is attested by the fact that we *have never been called back on a contract*, and numerous unsolicited letters of commendation have been sent to us by those we have served. Other notable installations are listed on the back page.

We Have Progressed Because of Principles, Not Policies

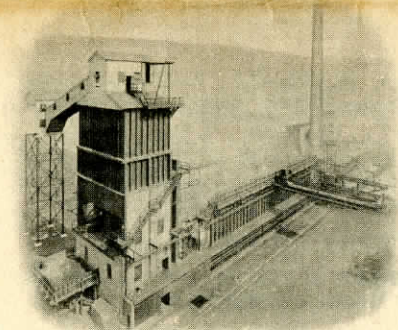
Large Piping Projects and High Pressure Installations, Our Specialty



U. S. STEEL
CORPORATION
Illinois Steel Co.,
Subsidiary,
Gary, Indiana

The complete boiler plant and power piping system was furnished and erected by us on this contract. The installation included piping for 11 boilers

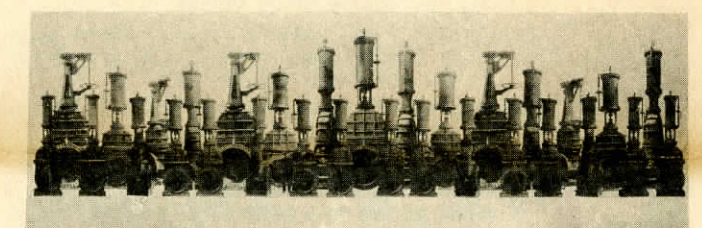
(400-lbs. 160 degrees superheat), 2—15,000 k.w. and 1—30,000 k.w. turbo-generators with all auxiliary and incidental equipment.



WEIRTON
STEEL COMPANY,
Weirton, W. Va.

A very large and complete installation was effected at this plant. It comprised all piping and erection for 24 boilers and 11 waste-heat boilers, turbo-generators, turbo-blowers, blowing engines, gas producers, fans, pumps, condensers,

etc. In addition, miscellaneous piping systems were installed, such as steam, air and water piping for two blast furnaces, circulating water, all hydraulic operating lines and mill and yard piping.



U. S. STEEL CORPORATION
Carnegie Steel Co., Subsidiary
Clairton By-Product Coke Works,
Clairton, Pa.

This installation is of unusual interest because it is the *largest coke plant in the world*. The contracts on which we furnished and erected completely all of the piping involved, provided for 34 boilers (300-lbs. 150 degrees superheat) and auxil-

iaries, 9 turbine gas boosters, condensers and all yard piping. The sizes on this installation were as large as 66 inches and some fittings weighed 15 tons. A group of valves, about half of the large valves used on this job, are shown above.

NOT *Romance* BUT *Reality*

THE following partial list of our clients, which it will be noted includes many names of distinction, is our greatest argument for your consideration. We shall be glad to have you make reference to any or all of them as to our ability to measure up to your requirements. On the contracts indicated we furnished all materials and erection.

- BETHLEHEM STEEL CO., Cambria Plant, Johnstown, Pa.—Rosedale and Franklin Works. Boiler Houses, Power Houses and Auxiliaries.
- BY-PRODUCTS COKE CORPN., Chicago, Ill. Sargent & Lundy, Inc., Engineers. Two boiler houses, six turbo-blowers, blast furnace, coke oven and yard piping 600 lb. W.S.P. "Sarlun" joints.
- CRUCIBLE STEEL CO. OF AMERICA, LaBelle Works, Pittsburgh, Pa. Boiler House, Power House and Mill Piping.
Blast Furnace, Boiler House, Power House and Auxiliaries.
- McKEESPORT TIN PLATE CO., McKeesport, Pa. Large Boiler House, Power House, and Mill and Yard Piping.
- SEMET-SOLVAY CO., Syracuse, N. Y. New Large Coke Oven and By-Product Plants at Rosedale and Franklin Plants, Bethlehem Steel Co., Johnstown, Pa.
- U. S. STEEL CORPORATION SUBSIDIARIES:
- AMERICAN SHEET & TIN PLATE CO., Farrell, Pa. Boiler House and Mill Piping.
- AMERICAN SHEET & TIN PLATE CO., Gary, Indiana. Yard Piping.
- CARNEGIE STEEL COMPANY, Duquesne Steel Works. Boiler House, Power House and Mill Piping.
- CARNEGIE STEEL COMPANY, Carrie Furnaces, Homestead Steel Works. Boiler Houses and Power Houses.
- CARNEGIE STEEL COMPANY, Edgar Thompson Works, Braddock, Pa. All High Pressure Piping. Large new Boiler House.
- ILLINOIS STEEL COMPANY, Gary, Indiana. Complete Piping Installation. Large new Boiler House and Power House.
- UNIVERSAL PORTLAND CEMENT CO., Buffington, Ind. Boiler House Piping.
- PITTSBURGH STEEL PRODUCTS CO., Allenport, Pa. Boiler House, Power House and Yard Piping.
- TONAWANDA IRON CORPORATION, North Tonawanda, N. Y. Blast Furnaces, Boiler House and Auxiliaries.
- TRUMBULL-CLIFFS FURNACE CO., Warren, Ohio. 600-Ton Blast Furnace, Boiler House, Power House and all Auxiliaries.
- U. G. I. CONTRACTING COMPANY, Philadelphia, Pa. Comal Station, New Braunfels, Texas. 600-lb.
- UNITED ELECTRIC LIGHT CO., Braddock, Pa. Day & Zimmermann, Inc., Engineers. Complete central station piping.
- WEIRTON STEEL CO., Weirton, W. Va. Entire Piping Contracts for two 600 and 800-Ton Blast Furnaces, Steel Plant, Open Hearth and Finishing Mills, and Extensions.
- WHEELING STEEL CORPORATION, Yorkville, Ohio. Boiler House, Power House and Mill Piping.
- WITHERBEE, SHERMAN & CO., Port Henry, N. Y. All Piping for new 500-Ton Blast Furnace, Boiler House, Power House and Auxiliaries, and Yard Piping.

We have furnished valves, fittings and piping on the following contracts for THE KOPPERS COMPANY, Pittsburgh:

- Clairton By-Products Coke Works
- Weirton Steel Company
- Republic Iron & Steel Co.
- Bethlehem Steel Co.
- Trumbull-Cliffs Furnace Co.
- Columbia Steel Corp.
- Diamond Alkali Company
- Battle Creek Gas Company
- Consumers Power Company
- Equitable Gas Company
- Louisville Gas & Electric Co.
- Camden Coke Company

If your plans are retarded, and it is desirable for erection to proceed without the further delay which would be necessitated by a letting on lump sum bids, we have a "unit price" plan which we have originated and which has been employed with distinct benefits to many of our clients. By this arrangement, the work may proceed without delay and you are still assured of the lowest possible cost. We shall be pleased to supply details of this plan.

B. FLOERSHEIM & COMPANY, INC.

FARMERS BANK BLDG.

PITTSBURGH, PA.

*If you keep us in mind!
You'll not fall behind!*