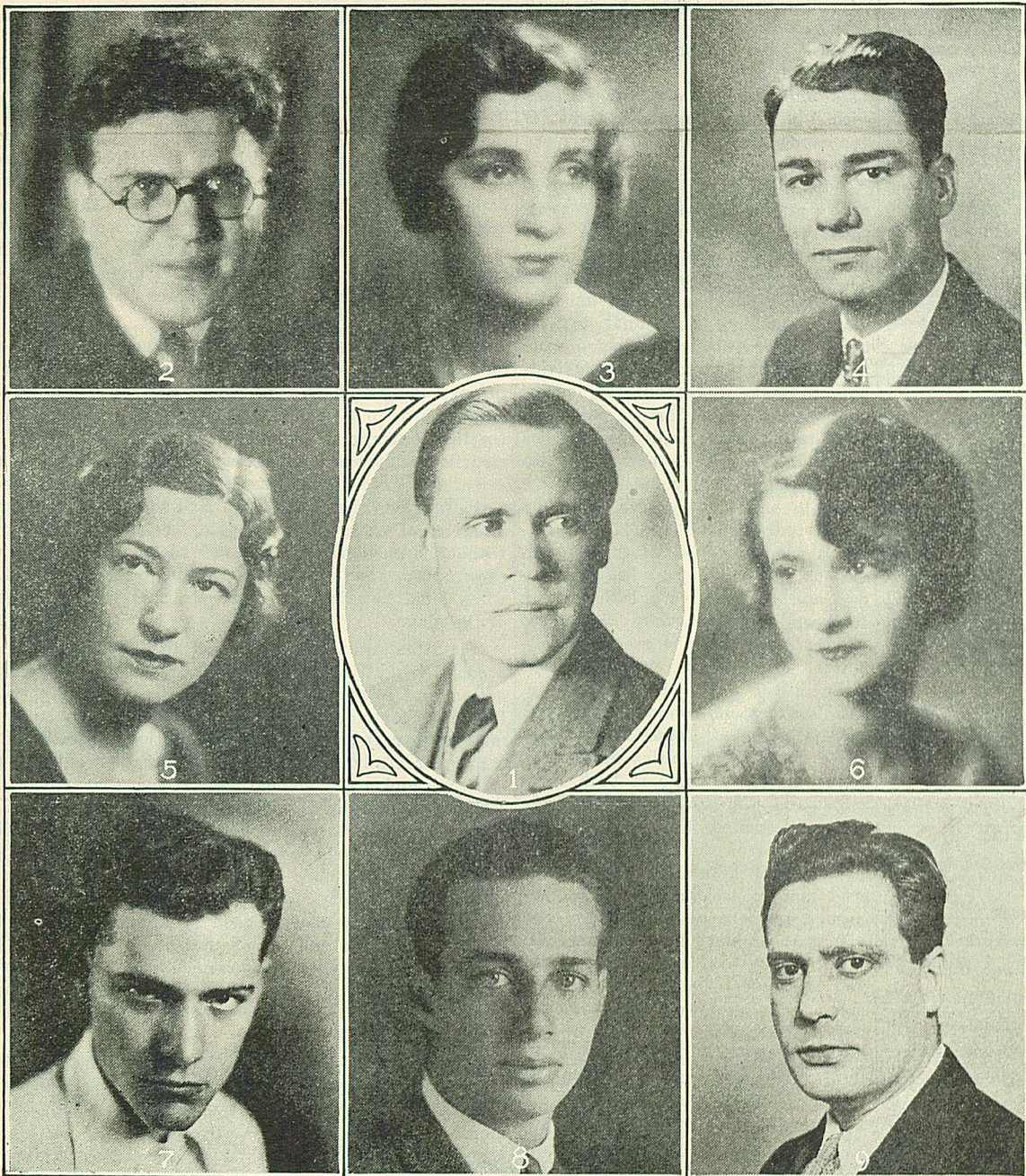


Have Roles In "Mask and Face"



Above are: 1. B. Iden Payne; 2. Abe Savage; 3. Mrs. Verner Calloman; 4. Alfred E. Smith; 5. Mrs. Jerome Katz; 6. Miss Cecile Braemer; 7. Philip Greenwood; 8. Frank Wertheimer; and 9. Richard Fishel members of the cast of "The Mask and the Face," a satirical comedy from the Italian, to be presented this Tuesday and Wednesday evenings, April 8 and 9, with B. Iden Payne as guest actor.

Cast of 17, Headed by B. Iden Payne To Give 'Mask and Face' Tuesday, Wednesday

Playhouse Presents Modern Drama Of Intrigue And Marriage As Third Offering of Season; Cast Includes Well-Known Actors; Helen R. Stout Directing Comedy

B. Iden Payne, popular drama director, now of the Goodman Memorial Theatre, former supervisor of the "Y" Playhouse, returns here next week as guest actor in "The Mask and the Face," satirical comedy to be presented Tuesday and Wednesday evening with Helen R. Stout directing.

In offering C. B. Fernald's "The Mask and the Face" as the third production of the 1929-1930 subscription series, the Playhouse is presenting a modern play with a well-trained cast of seventeen of which only three are newcomers to the group.

The one set required in this play has been constructed by the Stage Crew under the direction of Frank Stout. The problem of decorating this Italian room has been undertaken by the Colonial Art Furniture Company which is offering to completely furnish this room in an Italian setting. The company has the stucco walls, and French windows overlooking Lake Como to work on. The Italian Renaissance furniture, the paintings, and the wall hangings

are left to its discrimination.

In a play where the characters in formal attire are acting in a decidedly Italian atmosphere that fairly bristles with its intriguing complexities, the shadings in the various situations are more clearly etched by the skillful play of lights which the Stage Crew and the Stage Craft class under the direction of Frank Stout have worked out. Max Felder is technical director for the play; Harold Rosenblatt, stage manager, and Eugene Marchbein, lights.

Heading this cast made up of many former actors of the "Y" Playhouse and of many leaders in other dramatic groups in the city is B. Iden Payne who comes to Pittsburgh to participate in a "Y" Playhouse production and to direct a Shakespearean production at Carnegie Tech Drama School. Payne's popularity among Playhouse patrons was shown by the response to his last two appearances with the Playhouse in "The Dover Road" and "The Queen's Husband."

The other characters include: Savina Grazia, Mrs. Verner Calloman;

Delia Fanbri, Helen Tennie; Nina Zanotti, Mrs. Jerome Katz; Pier Zannotte, Alfred E. Smith; Georges Al-maire, Philip Greenwood; Ugo Prago, Frank Wertheimer; Luigi Bungli, Abe Savage; Wanda Borelli, Cecil Braemer; Teresa, Ida London; Tito, Louis Lowenstein; Franco Spina, Richard Fishel; Andrea, Samuel Eisenstat; A young girl, Belle Barsky; and Town Councilors, Harry Ziff, M. Gilly Reifer, and Jaques LeVine. Mrs. Walter Baer is production-assistant. Mary Rowland Clark is in charge of costumes and props and is assisted by French Anderson and Henrietta Cohen.

With the tempo of the play exceedingly fast and revolving about a group of wealthy and slightly decadent creatures to whom flirtation and intrigue form the greatest portion of their life, to whom one husband is as good as another and someone else's wife more exhilarating than one's own, the characters find themselves in many involved situations. Against this background the figures of the pompous, self-satisfied but precise

(Continued on Page 4)

PLAYHOUSE PRESENTS COMEDY APRIL 8 AND 9

(Continued from Page 1)

hero and his wife, Savina, a woman of beauty, dignity and charm stand out sharply. The entire play really disguises some profound words on men and women and modern marriage. The play further proves the weakness of a man who goes to the extreme lengths the hero does to escape the ridicule of his friends.

"The Mask and the Face" is a special favorite of dramatic groups, having been produced at the Cleveland Playhouse, the Goodman Memorial Theater of Chicago and the Everyman Theater in London.

At the "Y" Playhouse, where it is the policy of Mrs. Stout the director, to maintain extremely high standards, producing plays of an experimental nature that will yet offer her group the broadest medium for the individual types in the group, "The Mask and the Face" will meet all these requirements.
