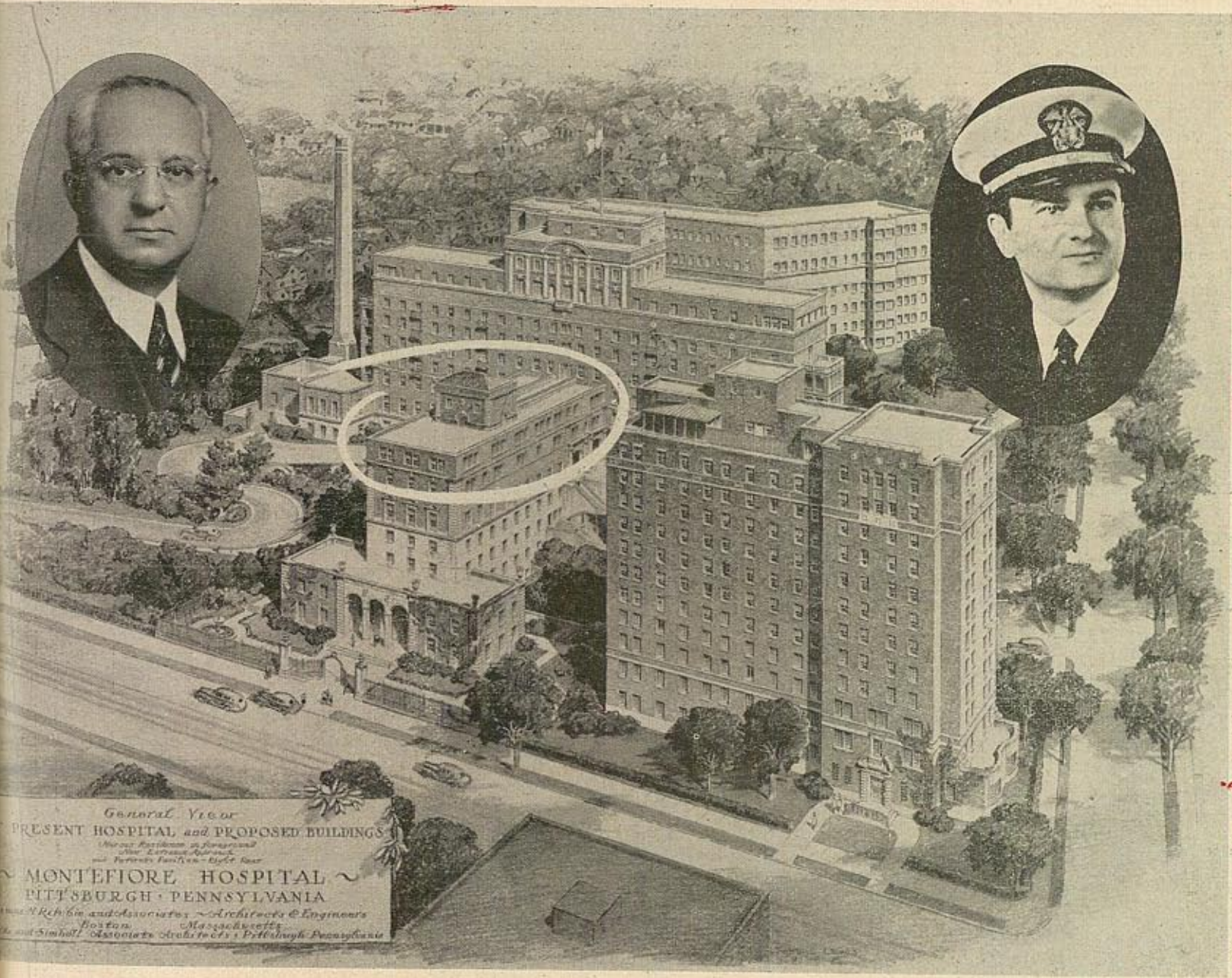


# THE Jewish Criterion



General View  
 OF PRESENT HOSPITAL and PROPOSED BUILDINGS  
 (Viewed Eastward in foreground  
 from Entrance Approach  
 and towards Pavilion - 1948 Year)

~ MONTEFIORE HOSPITAL ~  
 PITTSBURGH · PENNSYLVANIA

*James H. Rubin and Associates - Architects & Engineers*  
 Boston, Massachusetts  
*Wells and Simbalt - Associate Architects - Pittsburgh, Pennsylvania*

**FORMAL OPENING OF  
 ADELMAN MEMORIAL  
 MONTEFIORE HOSPITAL...JULY 17 AT 4:30**

**FOR 57 YEARS THE VOICE OF AMERICAN JEWRY**

**LEADING NATIONAL JEWISH WEEKLY**