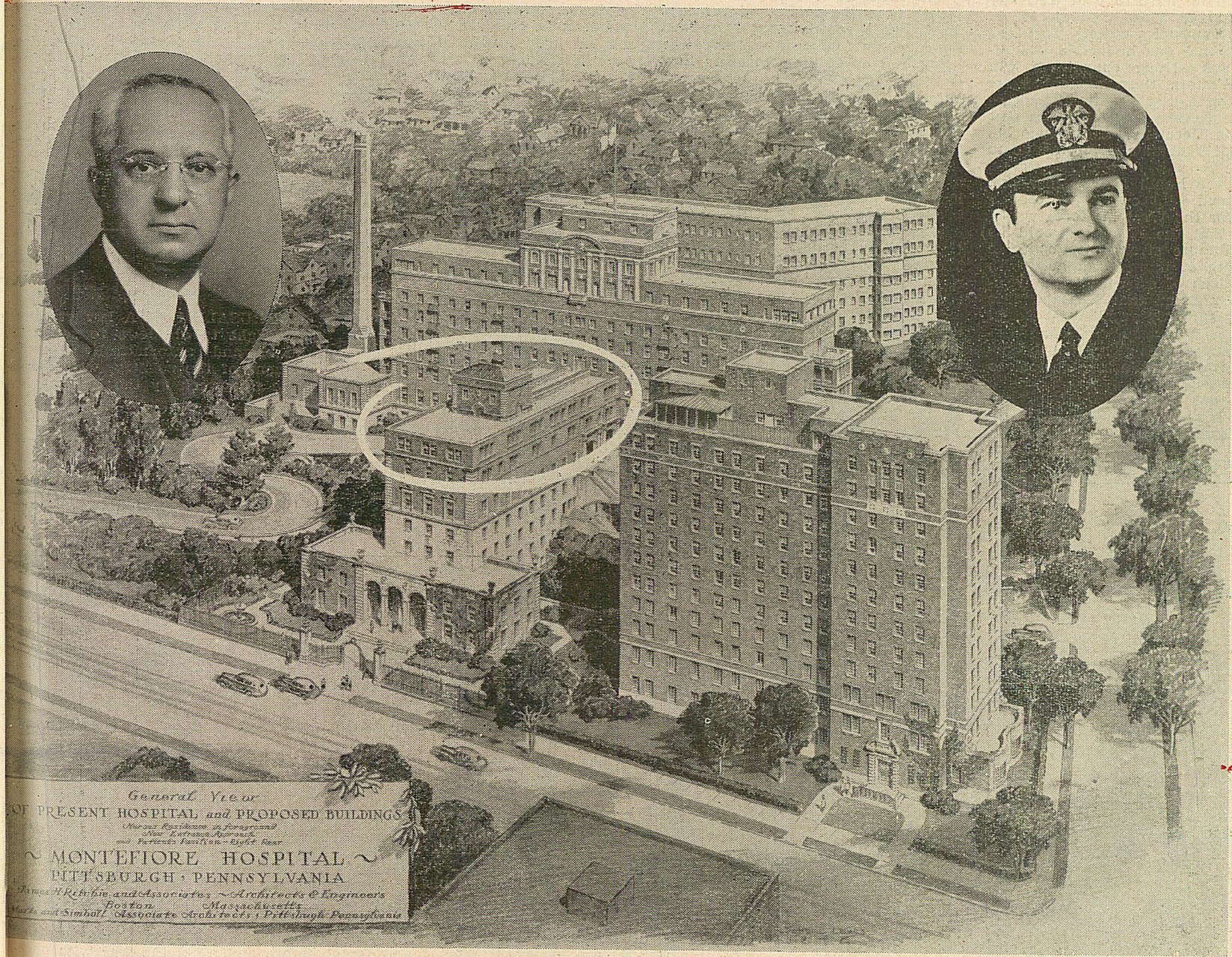


THE *Jewish Criterion*



General View  
 OF PRESENT HOSPITAL and PROPOSED BUILDINGS  
 ~ MONTEFIORE HOSPITAL ~  
 PITTSBURGH, PENNSYLVANIA  
 James H. Rubin and Associates - Architects & Engineers  
 Douglas M. Sackin  
 Marks and Simball - Associate Architects - Pittsburgh, Pennsylvania

**FORMAL OPENING OF  
 ADELMAN MEMORIAL  
 MONTEFIORE HOSPITAL...JULY 17 AT 4:30**

FOR 57 YEARS THE VOICE OF AMERICAN JEWRY

LEADING NATIONAL JEWISH WEEKLY